



THV Patricia – Specification

Port of Registry	London
Year Built	1982
Call Sign	GBTH
Length Overall	86.3m
Breadth Moulded	13.8m
Depth Moulded	6.9m
Draft	4.4m
Air Draft	32.0m
Service Speed	12kts
Fuel Consumption at 12kts	500ltrs/hr
Bunker Capacity	04t
Fresh Water	283t
Endurance	21 days
Bollard Pull	28t

PROPULSION – MACHINERY

Main Engines – 4 x Ruston 6RKcZ 750 kW @750 RPM
 Auxiliary Diesel – 2 x Ruston 4AP230Z 240 kW @600 RPM
 Propulsion Motors – 2 x 1120 kW @ 250 RPM
 Bow Thruster – 360 deg Whitegill – 7 tonnes 690 kW @ 480 RPM
 Propellers – 2 x Fixed pitch, outwards turning

WORKBOATS

9m heavy duty workboats x 2
 RIB 5.4m 50hp

CRANES

Speedcrane 20t SWL (offshore)
 Stores Crane 1t

CAPSTANS & WINCHES

2 x 14t max pull – chain to 44mm
 Towing Winch 30t max pull

DECK FACILITIES

Main Deck Area – 80m²
 Pressure Wash – 350bar/5000psi
 Tween Deck – Storage & workshops
 Hold – Storage & load handling

ACCOMMODATION

Single Cabins:	34
Double Cabins:	6
Office:	1
Conference Room:	1
Mess Room:	1
Recreation / TV Rooms:	4
Changing Room:	1
Workshop:	1
Gymnasium:	1

FLIGHT DECK

'D' Value 11.9m
 Max load 10,000kg

HYDROGRAPHIC SURVEY

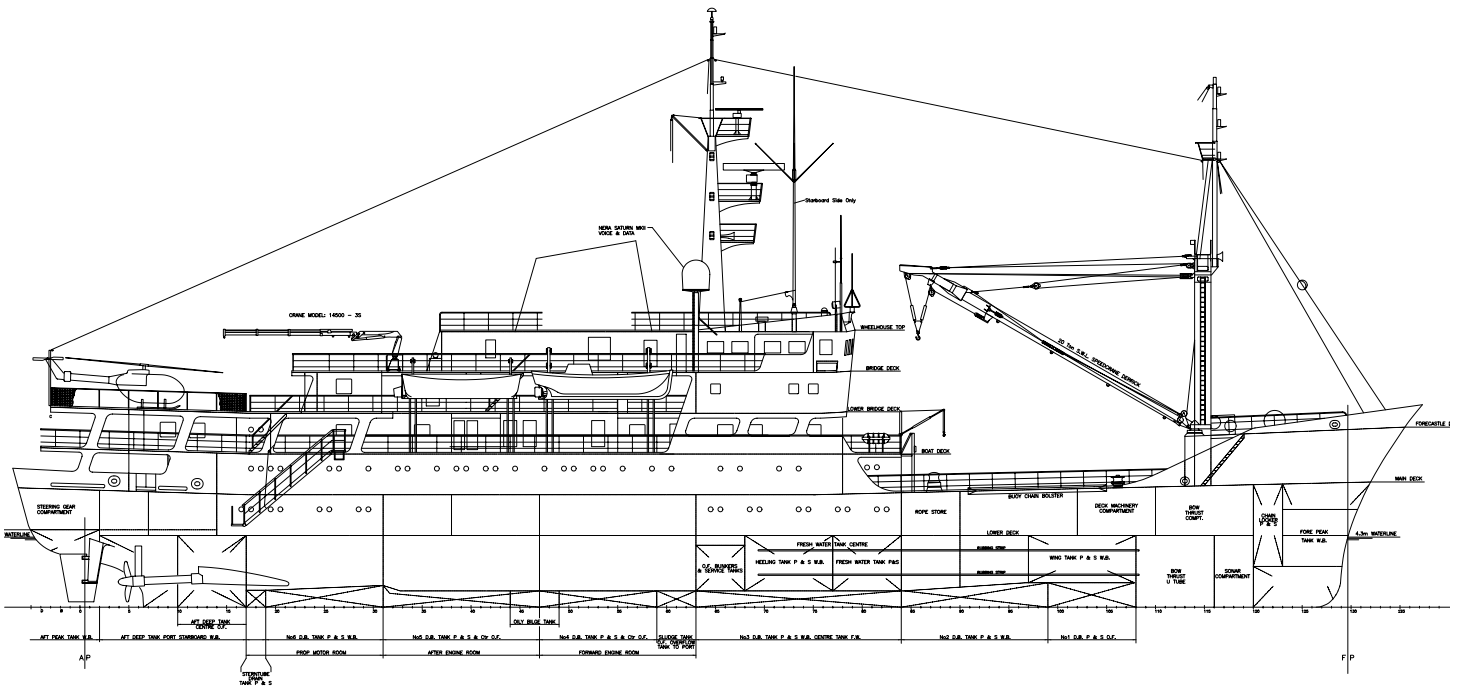
Kongsberg EA 400SP 38/200KHz
 Geo Acoustics Side Scan Sonar 2094
 SIMRAD EA500, Side Scan

COMMUNICATION

GMDSS Area 2
 Satcoms – Sat-C V-sat 4003 Broadband
 Sailor SC4000 Iridium, Nera Sat-B
 VHF R/T DSC – Sailor RT 5022
 MF/HF SSB – Sailor HC4500
 NavtexRx – JRC NCR 333
 Internet Access points – all cabins

NAVIGATION EQUIPMENT

ECDIS – Sperry VisionMaster FT
 Radars – Decca Marine Bridge Master x 2
 Dual-Axis Speed Log – Consilium
 Navigation SAL SD 1-6
 DGPS – SIMRAD GN33 and
 SIMRAD Shipmate GN30
 Loran – Furuno LC 90 mk2
 Gyro Compass – Simrad GC80
 TMC magnetic Compass– John Lilley and Gillie Type SR2
 Auto Pilot – Raytheon Compilot 20
 Echo Sounder – SIMRAD EA500
 AIS System – JRC AIS JHS-182



THV *PATRICIA* SPECIFICATION

Trinity House's Multi Functional Tender (MFT) *Patricia* operates around the coast of England, Wales and the Channel Islands undertaking aid to navigation maintenance work, towing, wreck location and marking amongst other projects. At 86m long, *Patricia* has accommodation for an additional 20 people and benefits from a helicopter-landing pad. With a 20 tonne main crane capacity and 28 tonne bollard pull and towing winch, she is also survey capable. Available 24/7, *Patricia* is available for a wide range of projects at a competitive rate.

BUILD STANDARD

Lloyds Register • 100 A1 • Lloyds Machinery Certificate, Unmanned Machinery Space Certificate, Lloyds Environmental Policy and Lifting Appliance. Complies with requirements for UK MCA Class V111 vessel.

Lloyds Ship Emergency Response Service.

