



THV Galatea – Specification

Port of Registry	London
Year of Build	2007
Call Sign	MRDQ7
Length Overall	84.2m
Breadth Moulded	16.5m
Depth Moulded	7.2m
Draft	4.3m
Air Draft	30.0m
Maximum Speed	17kts
Service Speed	12kts
Fuel Consumption at 12 kts	670ltrs/hr
Bunker Capacity	296t
Potable FW	170t
Technical FW	144t
Jet A1 Fuel Capacity	6,000ltrs
Endurance	35 days
Intering Stabilizer System	
Anti-Heeling System	
Bollard Pull	33t

PROPULSION – MACHINERY

3 x Wartsila 8L20 @ 1710 kVA
 2 x Wartsila 4L20 @ 860 kVA
 Stern Azimuths –
 2 x Rolls Royce 1500 kW
 Bow Thrusters –
 2 x Rolls Royce 750 kW

DYNAMIC POSITIONING SYSTEM

Kongsberg K-Pos DP-21
 (IMO DP Class II)

WORKBOATS

30 kts Pacific 28 with cabin for 6 pax.
 Steel Workboat – 9m heavy duty

CRANES

Liebherr Crane – 30t @ 22m
 (offshore)
 Palfinger Crane knuckle boom –
 1.6t @ 18.0m (offshore)
 Stores Crane x 2 –
 1.45t @ 10.0m (offshore)

CAPSTANS & WINCHES

2 x 15t max pull – chain to 44mm
 Towing Winch 40t max pull
 Tugger Winches x 2 – 5t max pull
 Karm forks x 2

DECK FACILITIES

Main Deck Area – 550m²
 ISO 20' and ISO 10' Container Lock
 Down matrix
 Electrical Power – AC 50Hz 220V;
 400V Supplies
 Pressure Wash – 350bar/5000psi
 Moon Pool – 1.2m²
 Tween Deck – Storage & workshops
 Hold – Storage & load handling

ACCOMMODATION

Single Cabins:	22
Twin Cabins:	9
Office:	1

Conference Room:	1
Mess Room:	1
Recreation /TV Rooms:	3
Changing Room:	1
Workshop:	2
Gym:	1

FLIGHT DECK

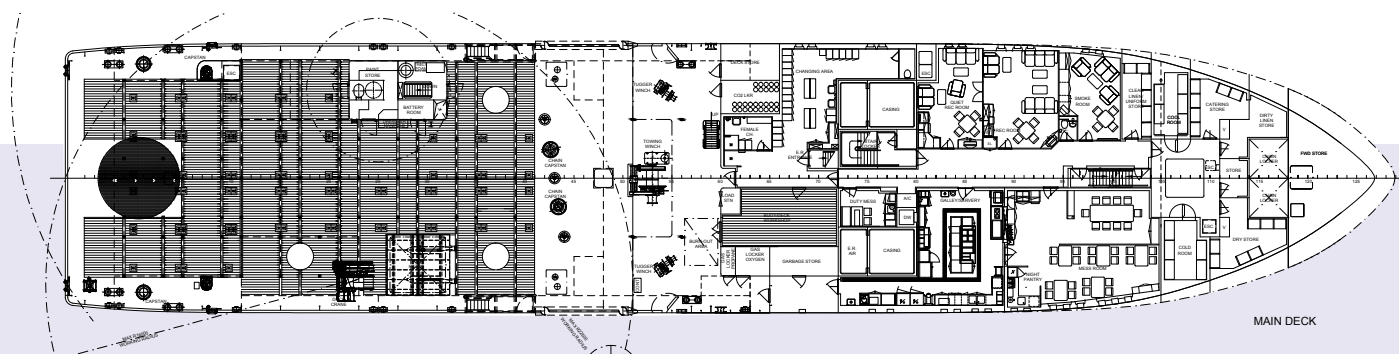
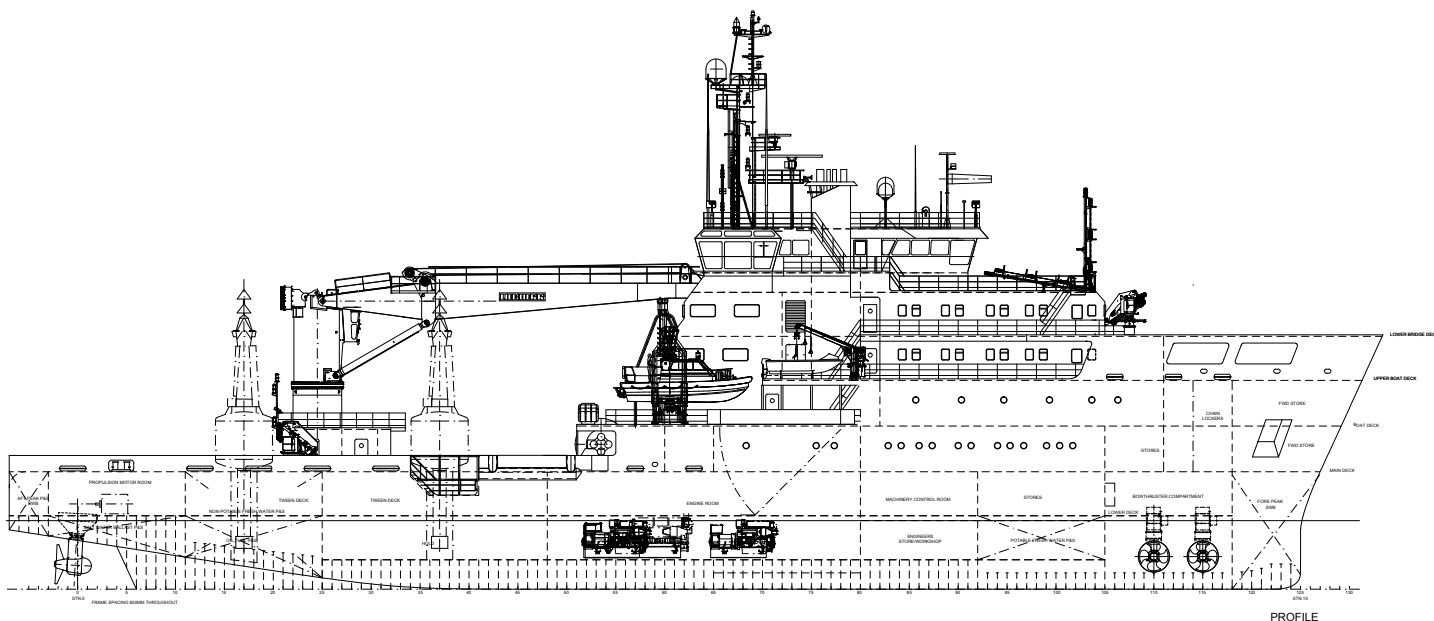
Helicopter Deck – 'D' Value 13.0m
 Refuelling Facility

HYDROGRAPHIC SURVEY

Kongsberg Simrad EM2040C
 Multi beam E/S
 Kongsberg Simrad EA 400 E/S
 PosMV Positioning
 Simrad SEN-218377 SVP
 Kongsberg TD304 Tide Gauge
 Simrad SL 30/35 Sonar
 Simrad GeoAcoustics Side Scan

COMMUNICATION

GMDS Area 2
 Satcoms – Sat-C H2095C High Speed
 Data/Voice
 Iridium – Sailor ST4110 Voice
 MF/HF SSB – Sailor HC4500 R/T DSC
 MF/HF SSB – R/T DSC
 Weather – FAX 207 Facsimile
 Navtex Rx – McMurdo ICS NAV5plus
 VHF R/T DSC – Sailor RT4722
 Internet Access – all Cabins



NAVIGATION EQUIPMENT

- ECDIS/NAV – F/AIS-R4
- Radars – Decca Bridge Master x 2
- Dual-Axis – SRD500 Speed Log
- DGPS – 2 x MX Marine MX 420/8
- Gyro Compass – 3 x Navigat 2100
- Fibre Optic
- TMC Magnetic – Navipol 1 Compass
- Auto Pilot – NaviPilot 4000 Digital
- Adaptive Autopilot
- Echo Sounder – ES 5100-01



THV GALATEA SPECIFICATION

Trinity House’s Multifunctional Tender (MFT), *Galatea*, has been designed with buoy handling, wreck marking, towing and multibeam and side scan Hydrographic surveying capability. With DP2, high specification survey equipment, a 30t lift crane, a 1.2m² moon pool, a large working deck with the facility to lock containers on deck and 230v or 400v plug-in supply, a helicopter-landing pad and a high speed workboat, *Galatea* is available 24/7 for a wide range of projects at very competitive rates.

BUILD STANDARD

Lloyds Register • 100 A1 • LMC UMS MCM EP LA CAC DPAA IMO CLASS II (Lloyds Machinery Certificate, Unmanned Machinery Space Certificate, Machinery Condition Maintenance, Lloyds Environmental Protection, Lifting Appliance and Crew Accommodation Comfort Standard). Complies with requirements for UK MCA Class VII vessel. GMDSS sea area A2.

