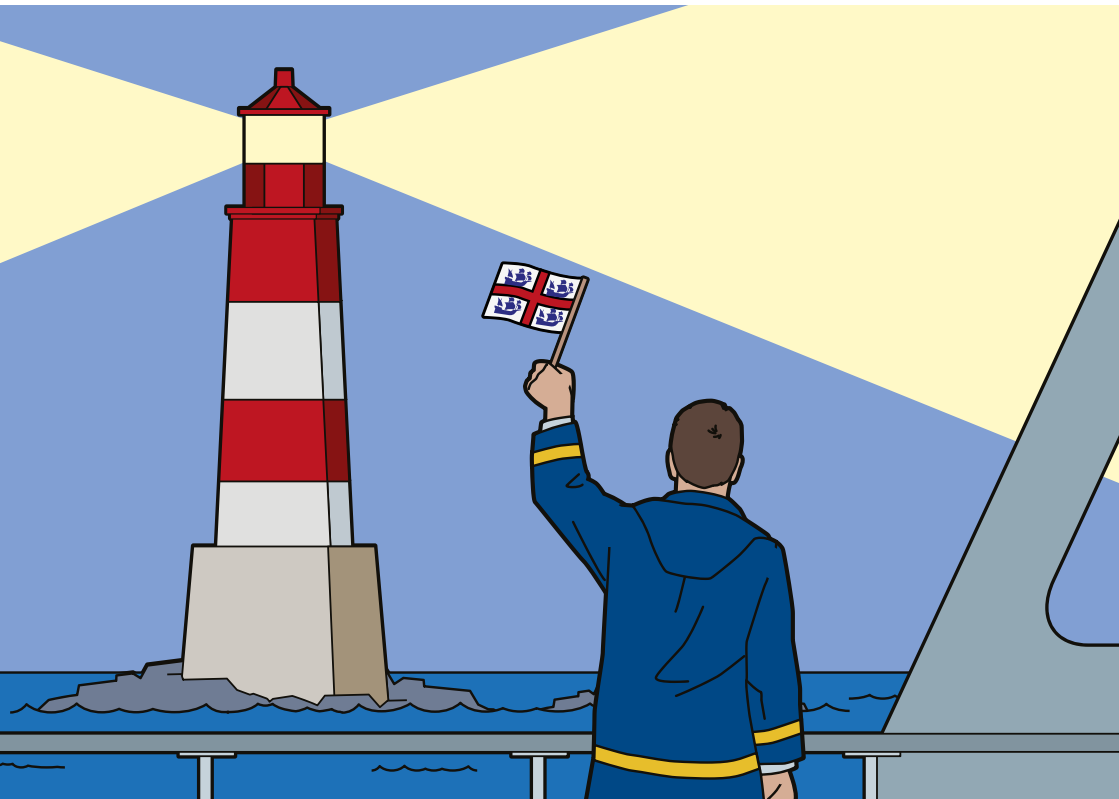




TRINITY HOUSE

WHO WE ARE

Your A to Z of Trinity House





TRINITY HOUSE

Trinity House is a charity dedicated to safeguarding shipping and seafarers, providing education, support and welfare to the seafaring community with a statutory duty as a General Lighthouse Authority to deliver a reliable, efficient and cost-effective aids to navigation service for the benefit and safety of all mariners

Introduction from the Deputy Master

Ours is a diverse organisation, and anyone—whether at sea or on shore—could be forgiven for not knowing the breadth and depth of Trinity House’s activities.

So in tried and true fashion we’ve come up with a bite-size guide to Trinity House in the form of an A to Z: 26 things you may or may not know about us, our work and the service and support we provide to the mariner.

Perhaps you knew that we operate over 60 lighthouses in England, Wales, the Channel Islands and Gibraltar, but did you know we also provide almshouses for aged mariners and their dependants?

Perhaps you’ve been to our Tower Hill headquarters, but did you know that we also have operational bases at Harwich, Swansea and St. Just

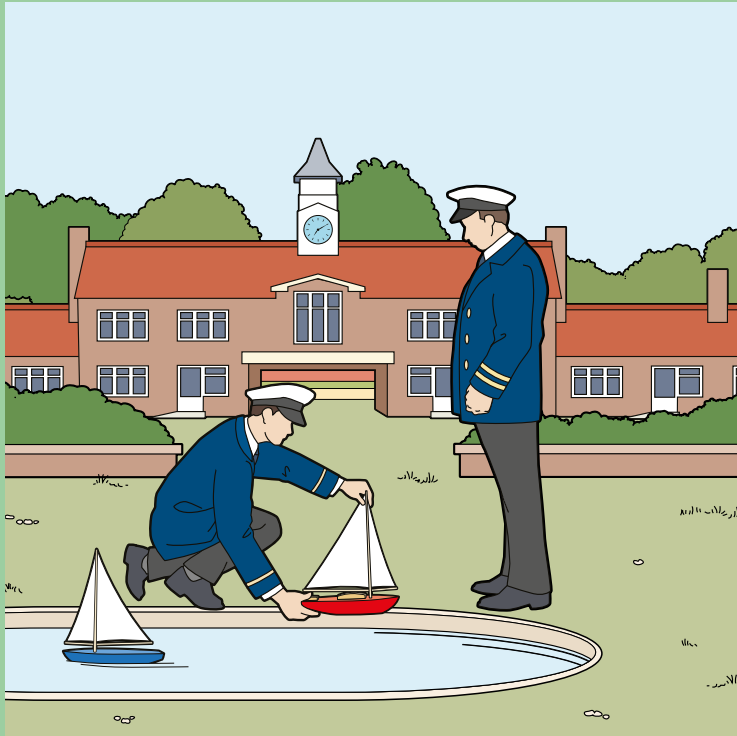
from where we deliver our front-end service? Did you also know that we have a duty to mark and sometimes remove wrecks that are a hazard to shipping?

You quite possibly already knew that many Trinity House lighthouses have an LED light source no bigger than your thumbnail, but you may not be so familiar with our work to develop robust Positioning, Navigation and Timing systems to complement the vulnerable GPS system.

Here we are in the second decade of the 21st century, with an astonishing breadth of responsibilities and depth of experience, hard won and skilfully built up over centuries. We’re more cost-effective, reliable and efficient than ever, and still looking for ways to improve and demonstrate value to our partners in maritime UK.



Captain Ian McNaught
Deputy Master of
Trinity House

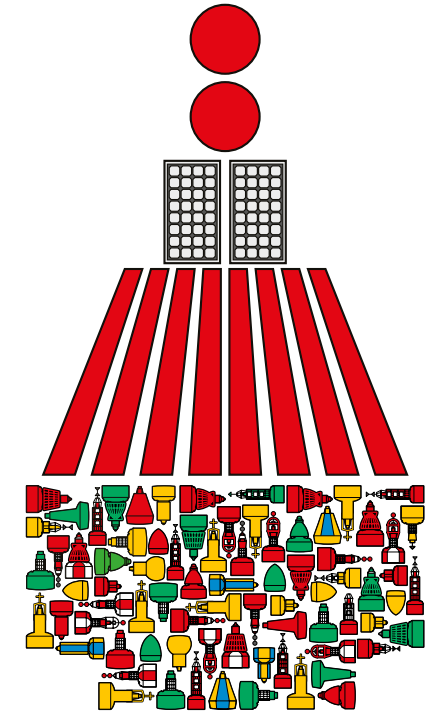


Almshouses

Trinity House's oldest duty is to provide support for aged mariners in need.

Almshouse estates at Deptford and Mile End were built centuries ago with donations from generous supporters; today, the 18 almshouses at Walmer in Kent accommodate mariners and their dependants.

trinityhouse.co.uk/almshouses



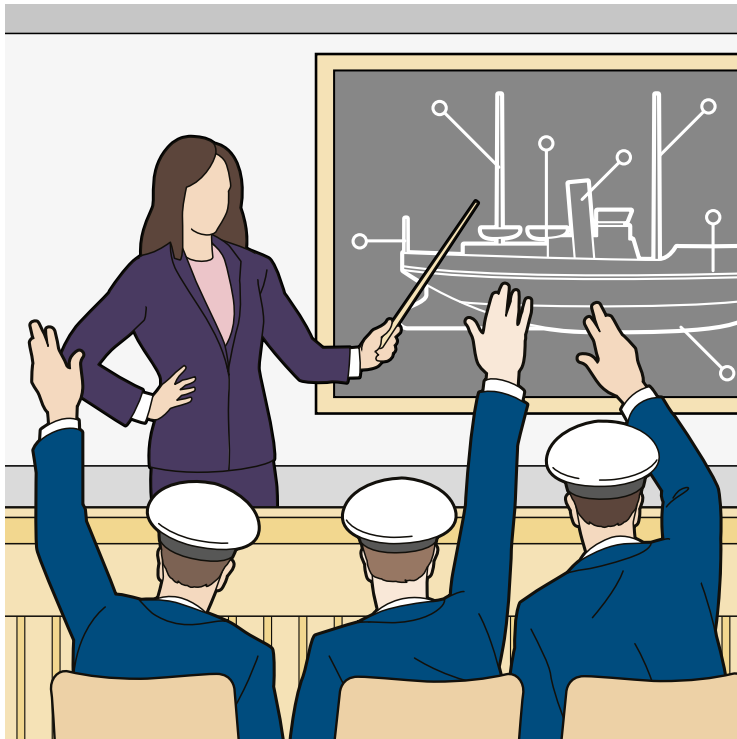
Buoys

Buoys are a very important part of Trinity House's mix of aids to navigation.

Their various colours, shapes and sizes are part of a visual language understood by mariners around the world, telling them about marine hazards to avoid and safe channels for travelling.

trinityhouse.co.uk/buoys





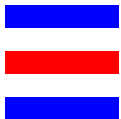
We sponsor 30 new Merchant Navy Cadets every year, training many on our own ships

Charity

Trinity House is a charity set up to improve the state of navigation in our waters and to provide support and training for mariners.

Sometimes this means providing lighthouses and other aids to navigation, and sometimes it could mean educating cadets or helping other maritime charities.

trinityhouse.co.uk/charity

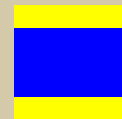


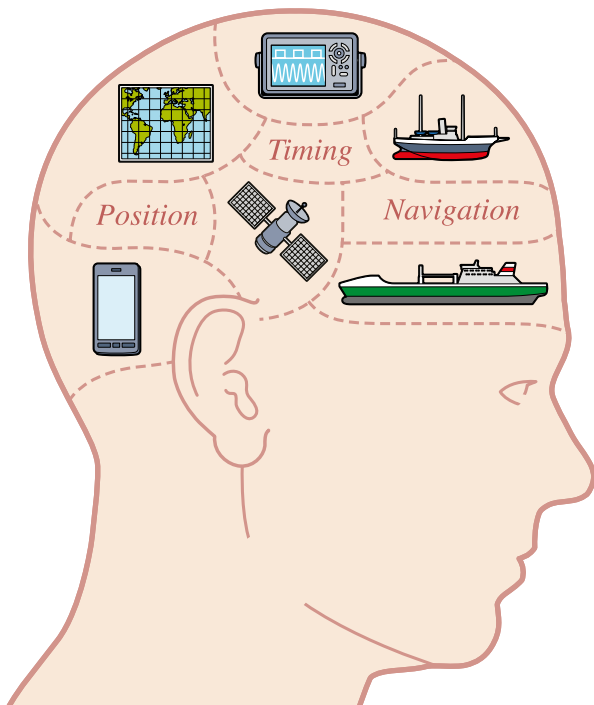
Dover Strait

The Dover Strait is the busiest shipping lane in the world, keeping Trinity House very busy and on alert at all times.

An incident in the strait—the narrowest part of the English Channel—could be a major hazard to the many ships that carry 95% of our everyday goods.

trinityhouse.co.uk/dover-strait

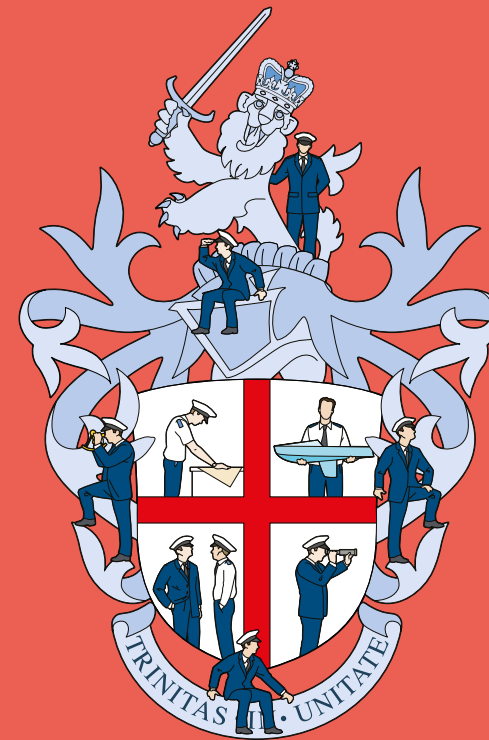
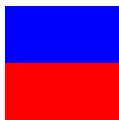




E-navigation

Trinity House works with other lighthouse authorities and maritime agencies to help research and develop elements of the International Maritime Organization's concept of e-navigation—such as position fixing and vessel routing—which will enhance the safety of shipping as modern shipping evolves.

trinityhouse.co.uk/e-navigation

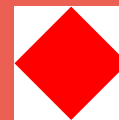


Fraternity

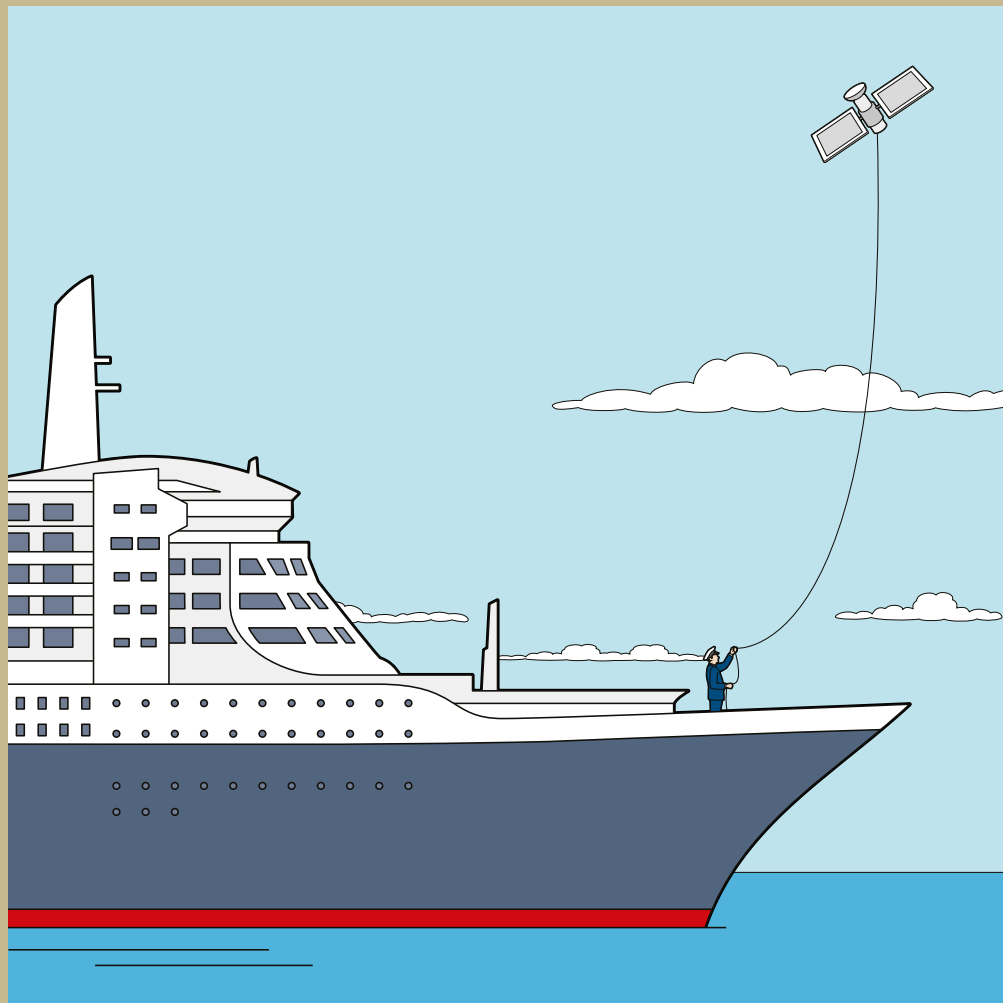
The Fraternity is made up of 31 elected Elder Brethren and around 400 Younger Brethren.

As defined by its Royal Charter, Trinity House is governed by the Master, Wardens and Assistants, with support from a fraternity of men and women bringing with them expertise from all walks of the maritime world.

trinityhouse.co.uk/fraternity



The Master of Trinity House is HRH The Princess Royal, who replaced her father HRH The Duke of Edinburgh in 2011



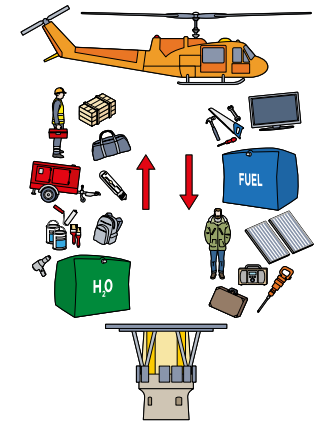
GNSS

Global Navigation Satellite Systems (GNSS) is a collective description of all satellite systems which provide world-wide coverage of position and accurate timing.

Systems such as GPS and GLONASS transmit signals from satellites which enable maritime, aviation or land-based users to determine their position to within a few metres.

trinityhouse.co.uk/gnss

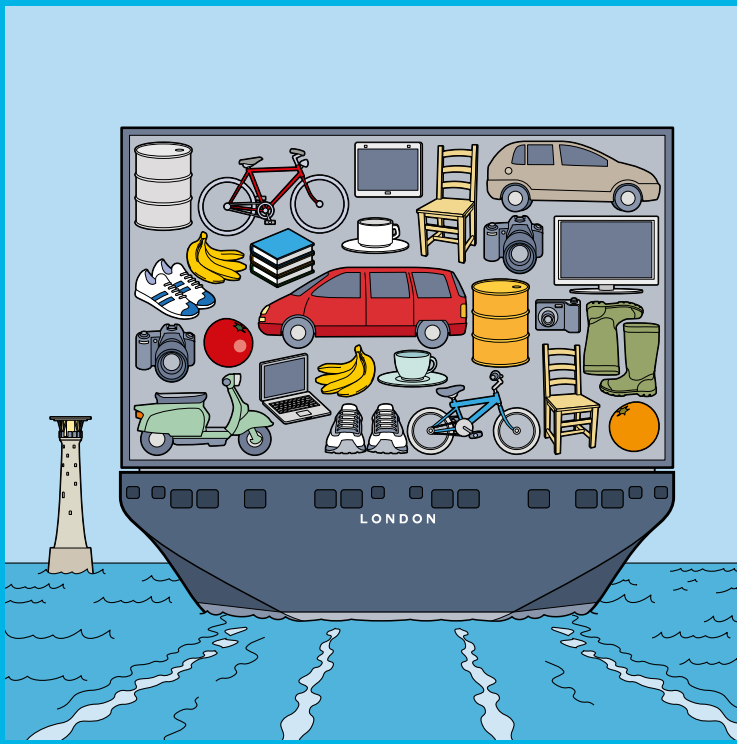
Helicopters



Trinity House began using helicopters in 1969 to transport people and supplies to and from offshore lighthouses.

The fast and safe transfer was a great step forward and meant that lighthouse keepers were no longer trapped by bad weather with dwindling supplies of food and fuel.





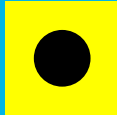
95% of all UK imports and exports are moved by sea! Every person in this country will touch, use and eat goods that have been brought to the UK by ship

International shipping

Seafarers from all over the world depend upon Trinity House aids to navigation for their safe passage through our waters and into our ports and harbours.

As shipping lanes around our island nation grow increasingly crowded and our demand for consumer goods rises, ships and seafarers depend upon Trinity House's reliable aids to navigation, a vital part of the maritime infrastructure.

trinityhouse.co.uk/international-shipping



Journeys by sea

Trinity House works around the clock to ensure that mariners are safe, well-trained and supported.

The sea has always been unpredictable and dangerous; as a charity dedicated to the safety of the mariner Trinity House not only provides aids to navigation to mark hazards but as a charity also seeks to ensure that British commercial shipping is crewed by well-trained men and women.

trinityhouse.co.uk/journeys-by-sea



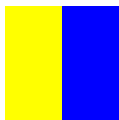
King Henry VIII



Trinity House has been serving the mariner since 1514.

On 20 May 1514 Henry VIII incorporated Trinity House as the Master Wardens and Assistants of the Guild Fraternity or Brotherhood of the most glorious and undivided Trinity and of St. Clement in the Parish of Deptford Strond in the County of Kent.

trinityhouse.co.uk/king-henry-viii



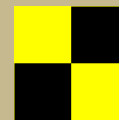
Lighthouses



Trinity House owns and maintains over 65 lighthouses in England, Wales, the Channel Islands and Gibraltar.

Trinity House built its first lighthouse at Lowestoft in 1609; ever since, Trinity House lighthouses have become world-renowned for their innovative design, high calibre engineering and perennial reliability.

trinityhouse.co.uk/lighthouses



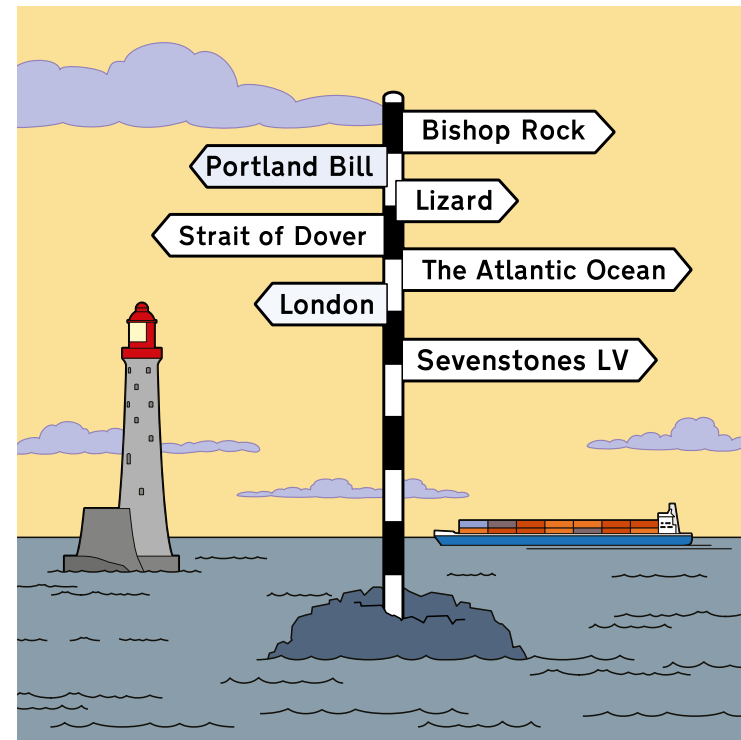


Monitoring

Trinity House's aids to navigation are monitored 24 hours a day from the Planning Centre in Harwich, Essex.

The Planning Centre works with many other key maritime safety organisations to keep apprised of the ever-changing situations in our waters, prepared to act quickly should an incident arise.

trinityhouse.co.uk/monitoring



We provide over 600 aids to navigation along the coast of England, Wales, the Channel Islands and Gibraltar; these include lighthouses, buoys, lightvessels, beacons and DGPS

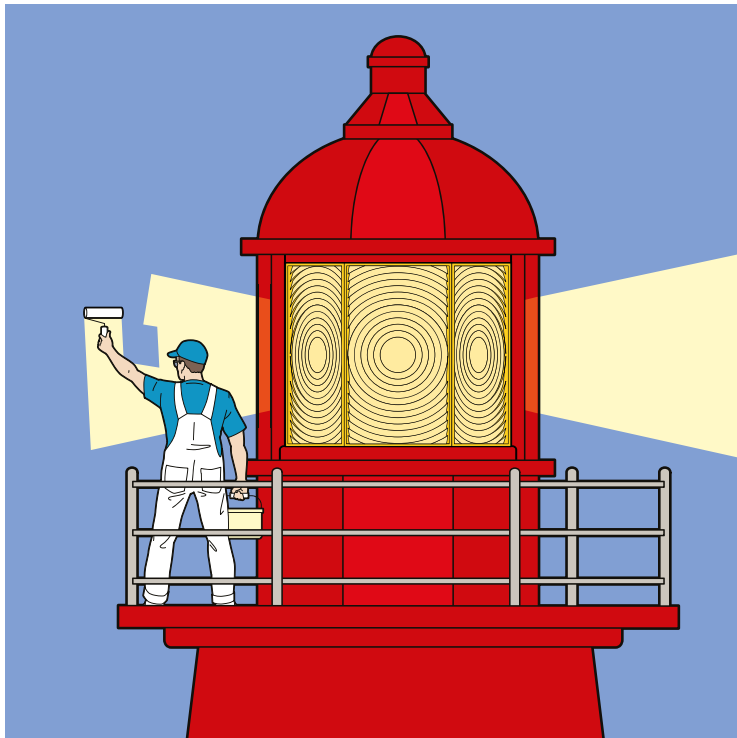
Navigation

Our aids to navigation help mariners navigate their way safely around some of the UK's busiest waters including the Dover Strait—the world's busiest shipping lane.

Our lighthouses, buoys, lightvessels, beacons and electronic aids to navigation systems assist all mariners at all times and in all conditions.

trinityhouse.co.uk/navigation



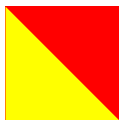


Optics

Many Trinity House lighthouses have a light source no bigger than a thumbnail.

It is the optic—a carefully arranged framework of prisms—that collects the light and projects a focused beam for up to 25 miles towards the horizon. Rotating the optic gives the lighthouse its distinctive ‘flash’ character!

trinityhouse.co.uk/optics

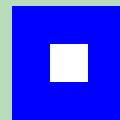


Pilotage

Trinity House provides expert navigators for ships sailing in Northern European waters.

Ensuring the continuance of one of our oldest duties, Trinity House became a licensing authority for deep sea pilotage, along with its namesakes in Hull and Newcastle.

trinityhouse.co.uk/pilotage



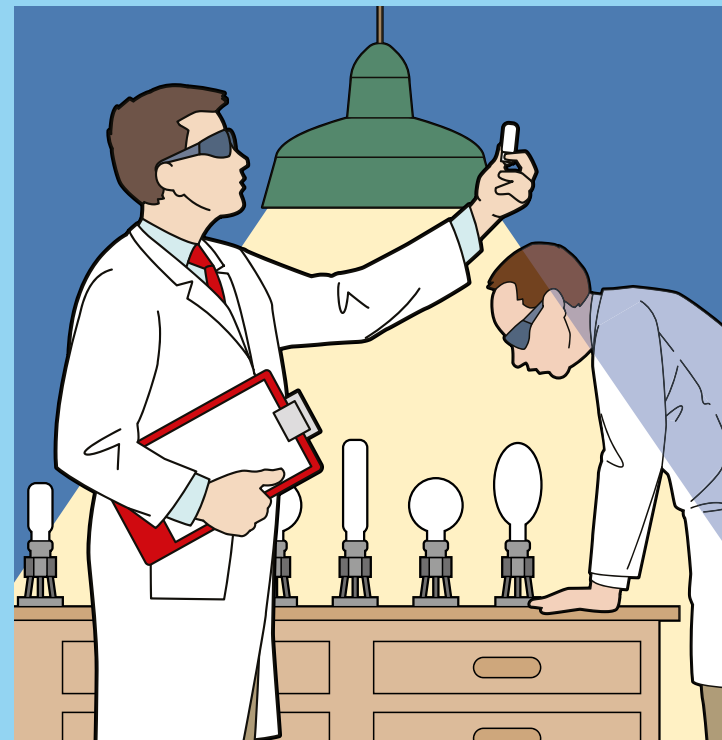


Queen Elizabeth I

Trinity House's connection with lighthouses dates back to Queen Elizabeth's I Seamarks Act of 1566.

Elizabeth gave the corporation the powers to set up *"So many beacons, marks and signs for the sea... whereby the dangers may be avoided and escaped and ships the better come into their ports without peril"*.

trinityhouse.co.uk/queen-elizabeth



Trinity House works with other lighthouse authorities and maritime agencies to research and develop new aids to navigation technology

Research & development

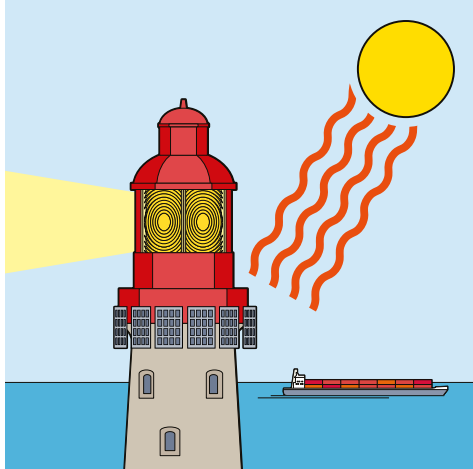
Research and Development is a central resource for the three General Lighthouse Authorities.

Its core business is the research and development of physical and radio marine aids to navigation and support systems to support the GLAs' mission to provide aids to navigation for the benefit and safety of all mariners.

trinityhouse.co.uk/research-and-development



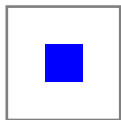
Solar power



As part of our commitment to using renewable energy to power the majority of our offshore aids to navigation, all lighted buoys and almost 30 lighthouses are now solar-powered.

We are also looking for ways to use wind and wave energy and hybrid systems to help protect the environment.

trinityhouse.co.uk/solar-power

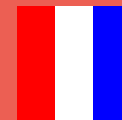
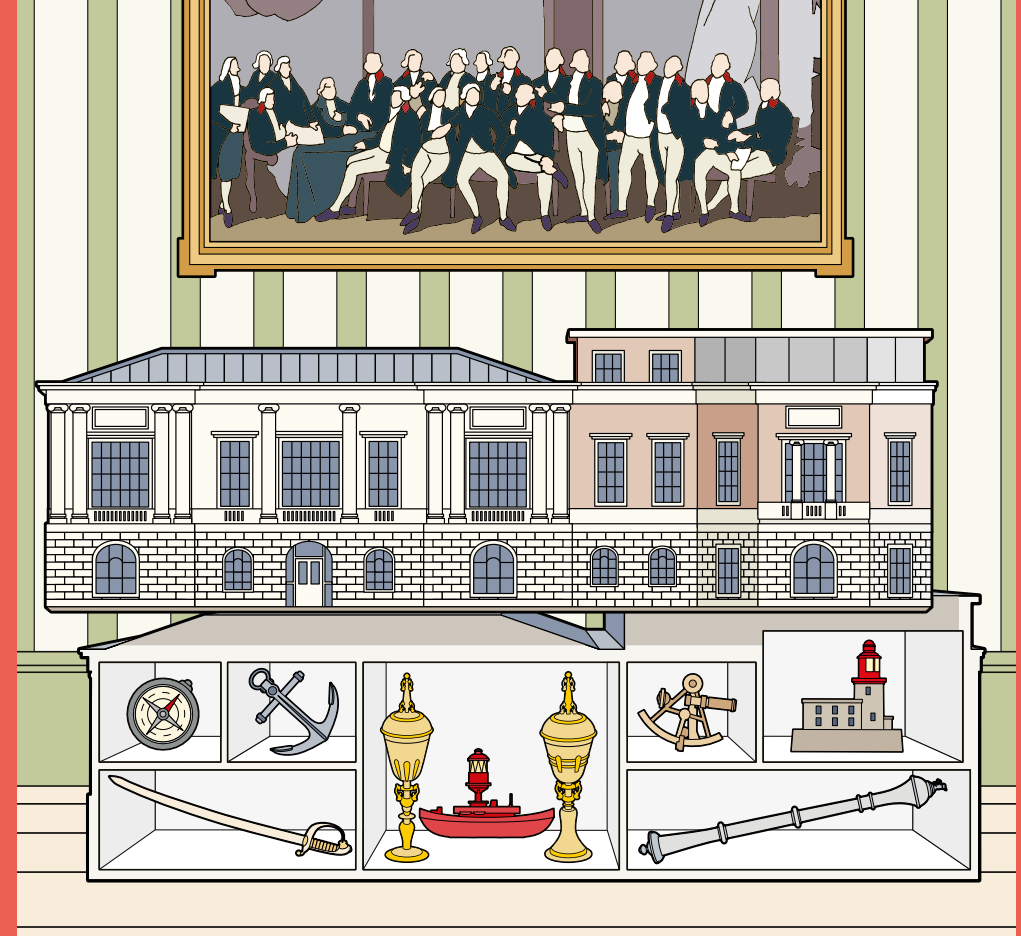


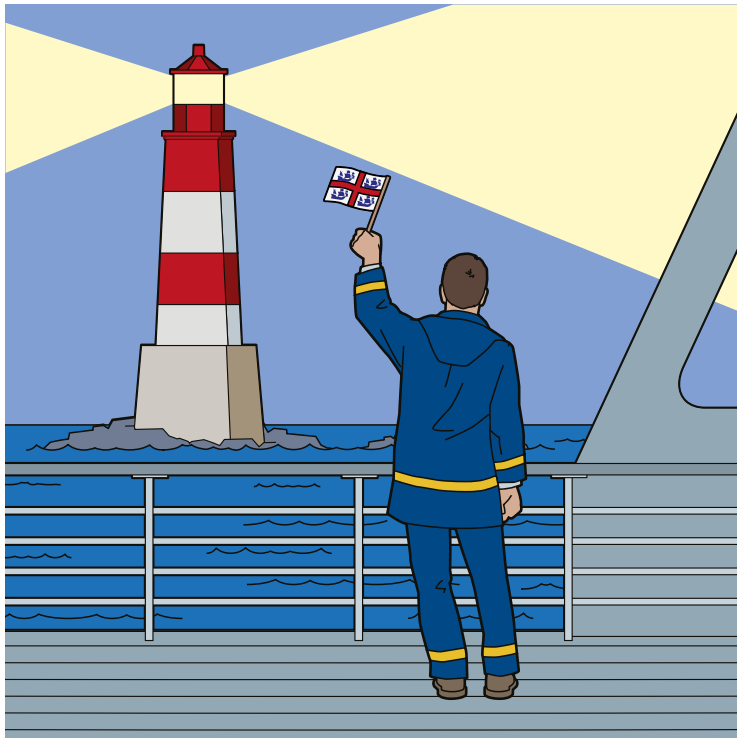
Trinity House, London

Since 1796 Trinity House has been based at its central London headquarters at Tower Hill, alongside the River Thames.

Rebuilt after the Second World War, its beautifully-appointed rooms have hosted royalty, mariners, prime ministers, scientists and visitors from all over the world and houses many fine paintings, models and treasures.

trinityhouse.co.uk/
trinity-house-london



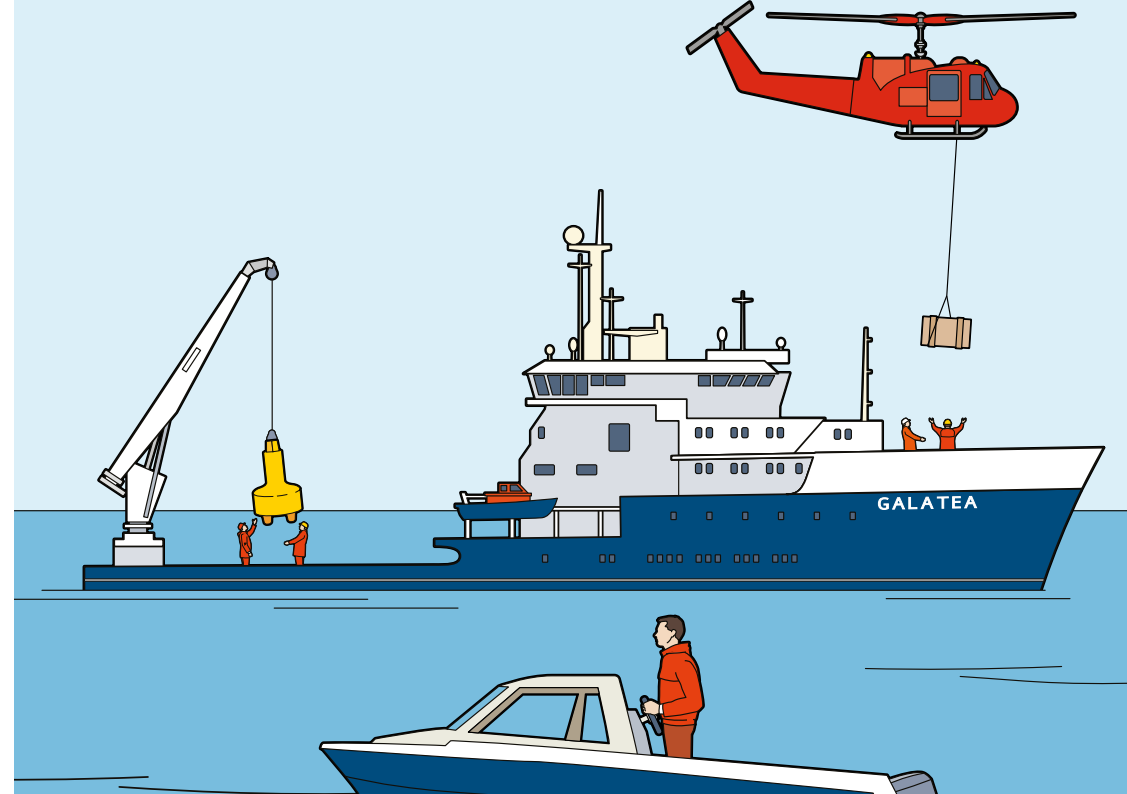
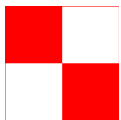


User pays

Trinity House carries out its duties at no expense to the taxpaying public.

Our work as a General Lighthouse Authority is financed from Light Dues paid into the General Lighthouse Fund by commercial vessels calling at ports in the British Isles, based on the tonnage of the vessel.

trinityhouse.co.uk/user-pays



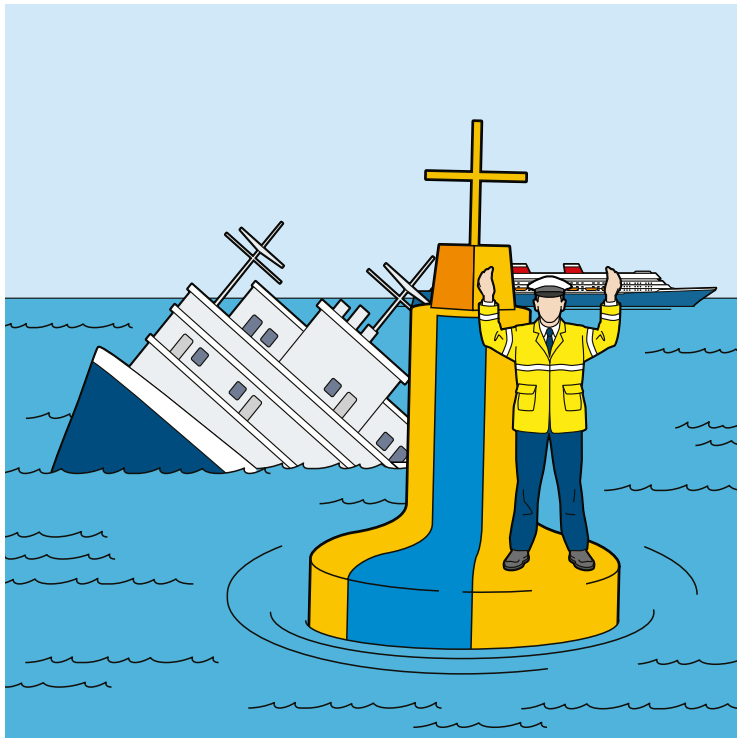
Vessels

Trinity House has a fleet of three purpose-built vessels: THV *Galatea*, THV *Patricia* and THV *Alert*.

All carry out the important work of maintaining and supplying our offshore aids to navigation, routinely steaming skillfully into sea areas that all other ships are warned to steer clear of.

trinityhouse.co.uk/vessels



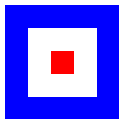


Wreck marking

Trinity House has a duty to mark and sometimes remove wrecks that are a hazard to shipping.

Lightweight blue and yellow Emergency Wreck Buoys exhibiting a blue and yellow flash are placed temporarily around a new wreck until permanent black and yellow 'cardinal' buoys can be placed.

trinityhouse.co.uk/wreck-marking



X marks the spot

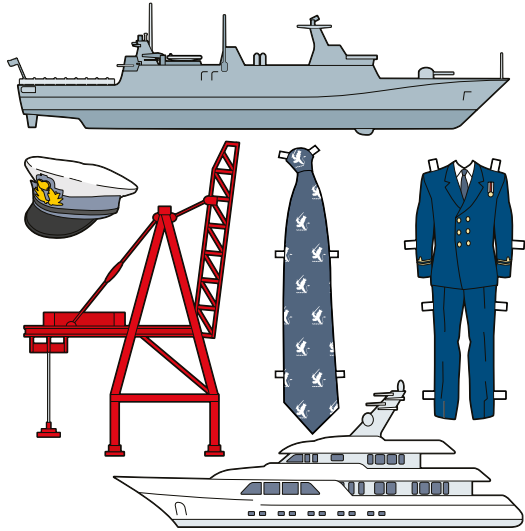
Trinity House works hard to ensure that our aids to navigation (as well as the 11,000 local marks we inspect annually) are all of the best service to the mariner.

Tides, channels and hazards—whether natural or man-made—are all factored in by Master Mariners with many years of experience.

trinityhouse.co.uk/x-marks-the-spot



Younger Brethren



Trinity House has a fraternity of almost 400 Younger Brethren drawn from various sectors in the maritime community.

They contribute to the unique authority of Trinity House in the maritime sector, giving valuable assistance and advice on the Corporation's maritime and charitable activities.

trinityhouse.co.uk/younger-brethren

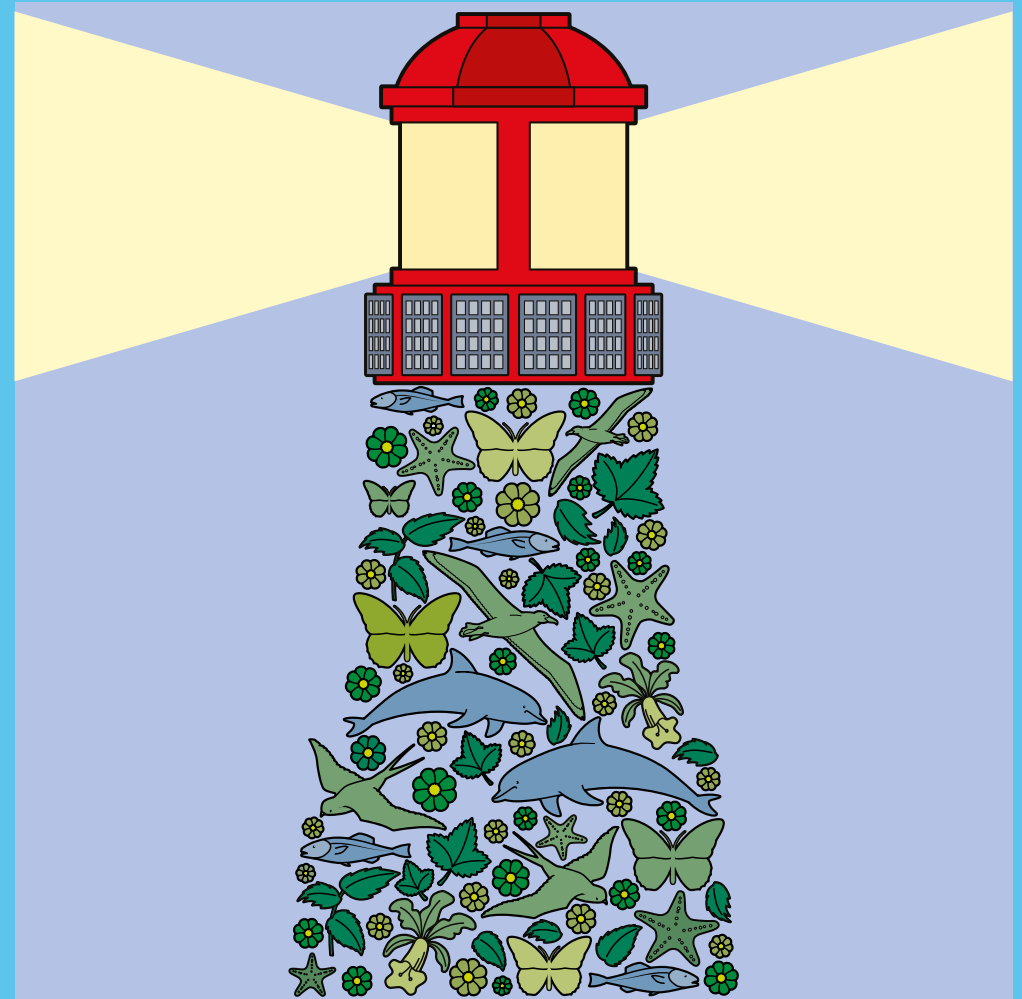


Zero emissions?

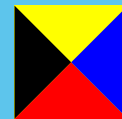
Although we cannot claim zero emissions because of the nature of our work around the coast, Trinity House is committed to preserving the beautiful coastal environment in which we work.

To minimise our carbon footprint we plan our operations efficiently and use solar power on many of our aids to navigation.

trinityhouse.co.uk/zero-emissions

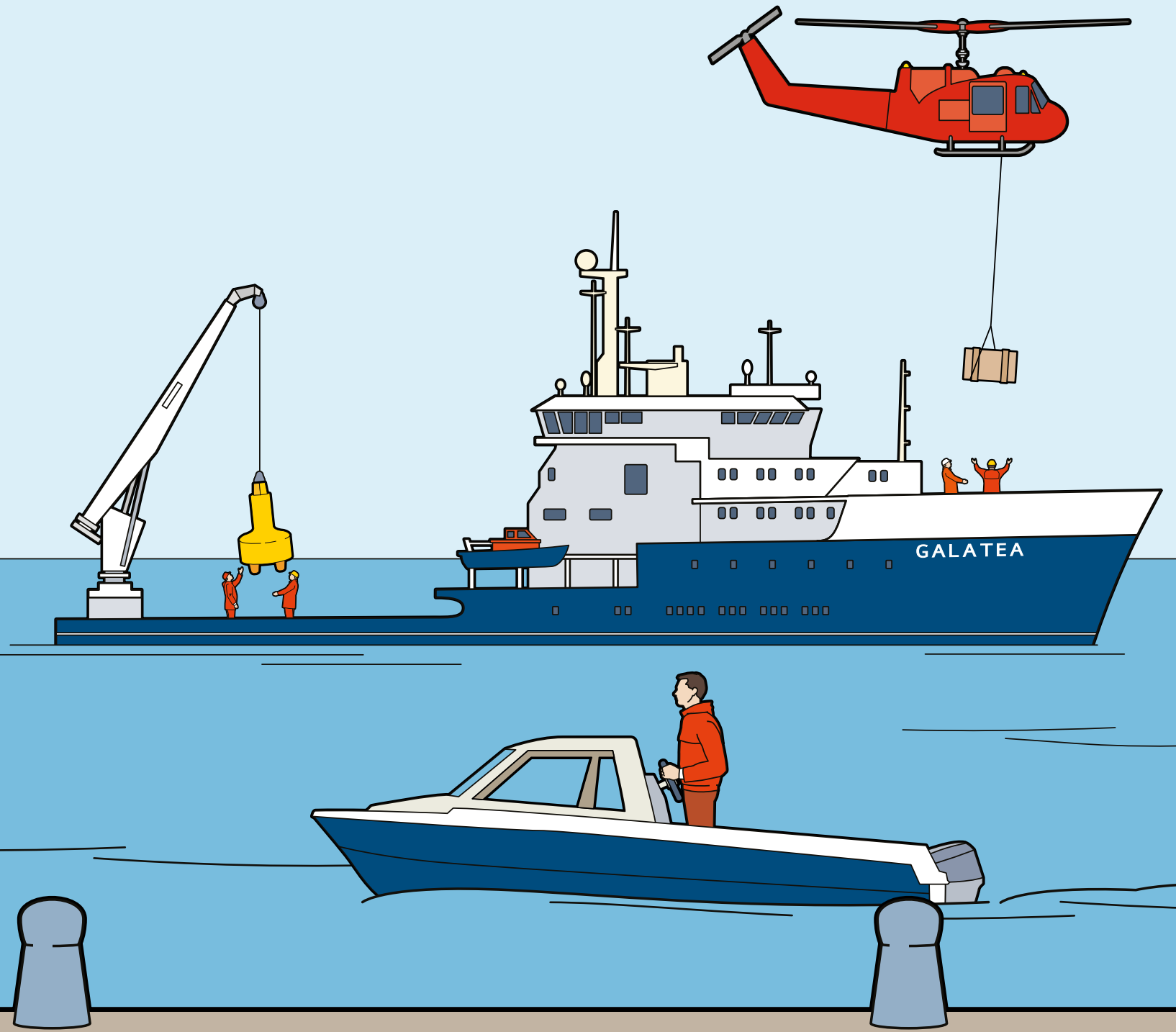


Since 1991 Trinity House has reduced its CO₂ output for the operation of its aids to navigation by 94%, saving 1,863 tonnes per annum





TRINITY HOUSE



For more information about our work as the General Lighthouse Authority for England, Wales, the Channel Islands and Gibraltar and the UK's largest endowed maritime charity please visit trinityhouse.co.uk



TRINITY HOUSE

For the benefit and safety of all mariners



Trinity House

Tower Hill, London EC3N 4DH

+44 (0) 20 7481 6900

enquiries@trinityhouse.co.uk

trinityhouse.co.uk