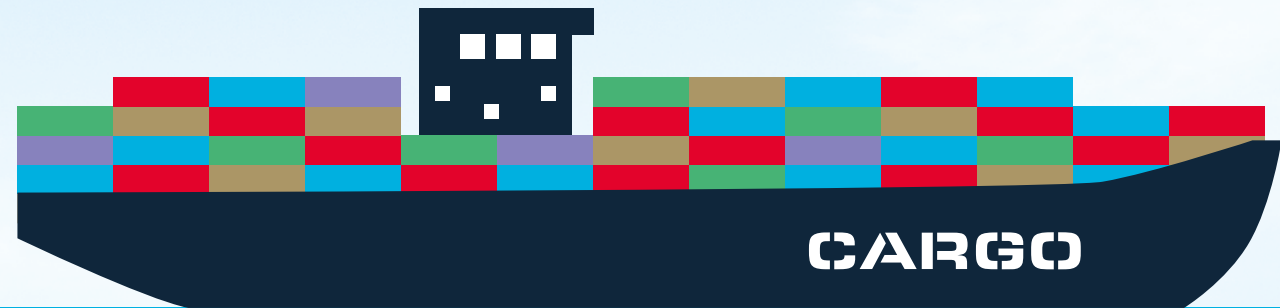




TRINITY HOUSE

Why is shipping important?



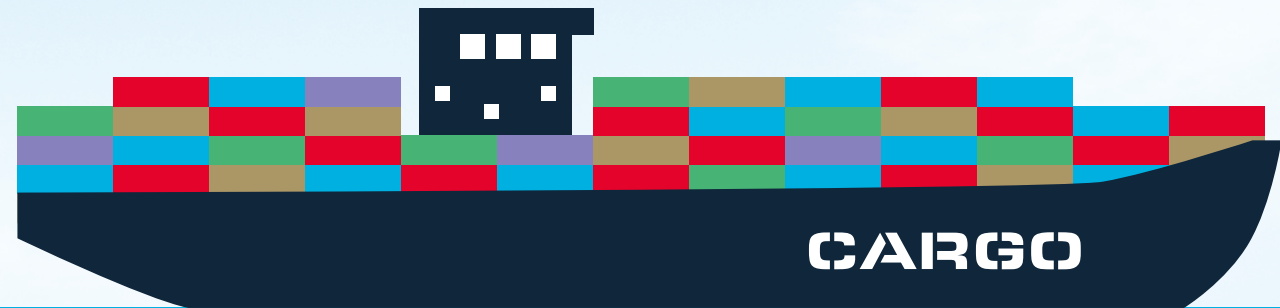
Starter →

Activity 1a →

Activity 1b →

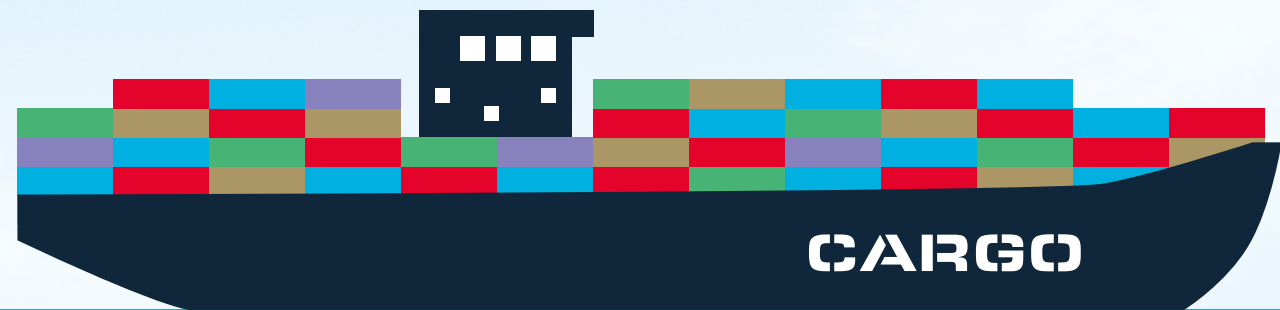
Activity 2 →

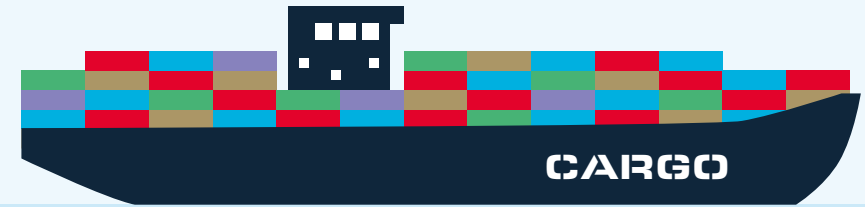
Plenary: Quiz →



Starter

Where does fruit come from?

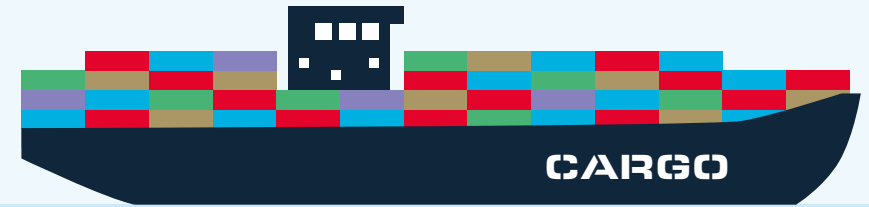




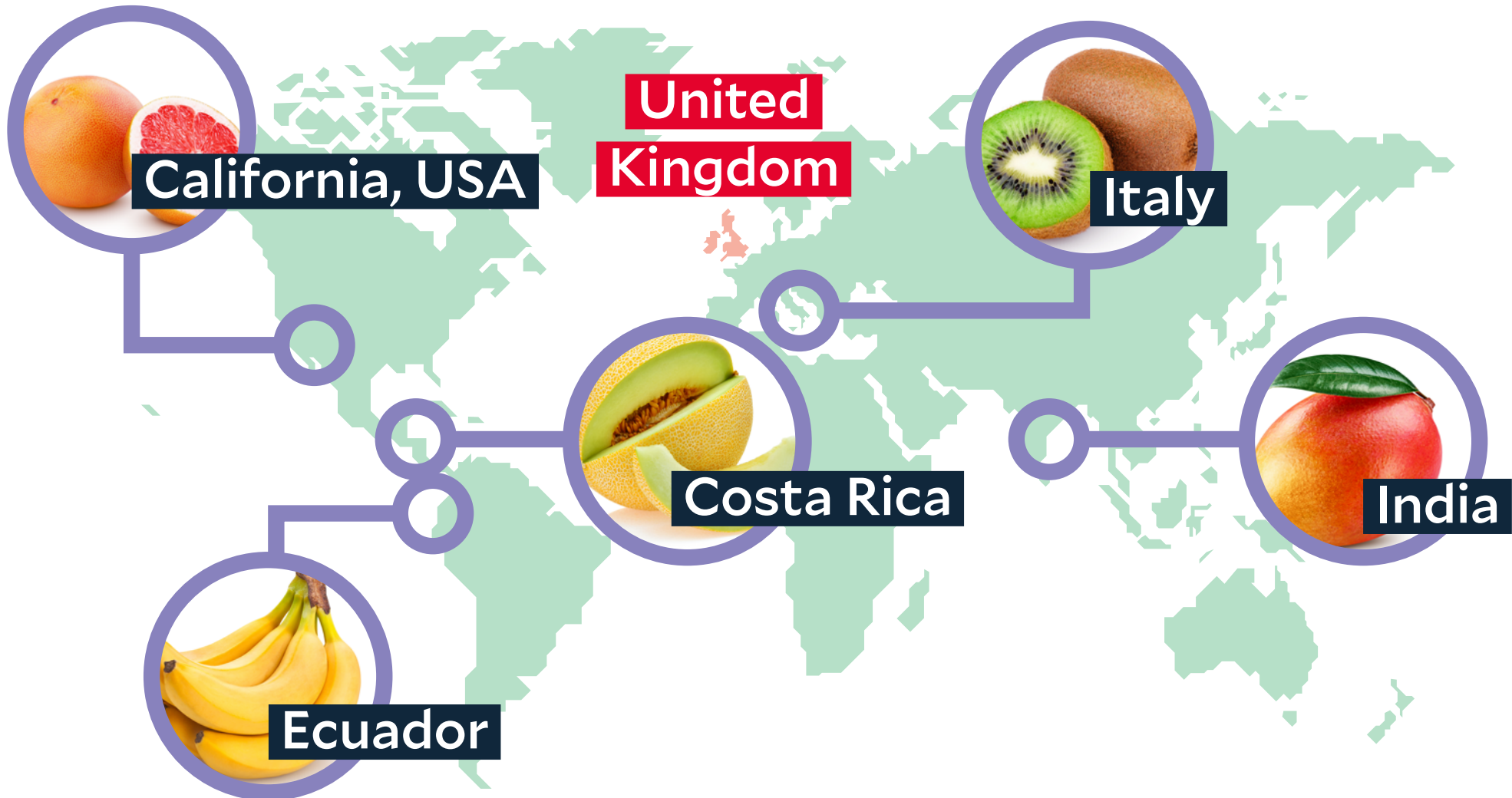
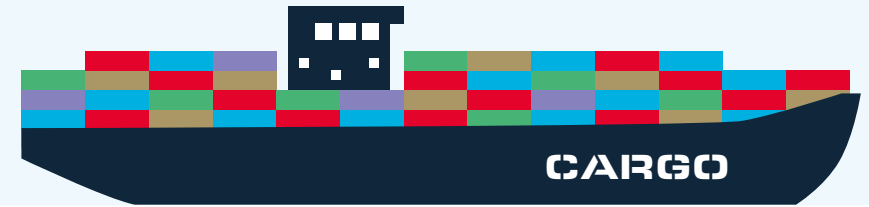
We have a range of different fruits and vegetables available in our shops and supermarkets. Can you name each fruit? How many of them are grown in the UK?



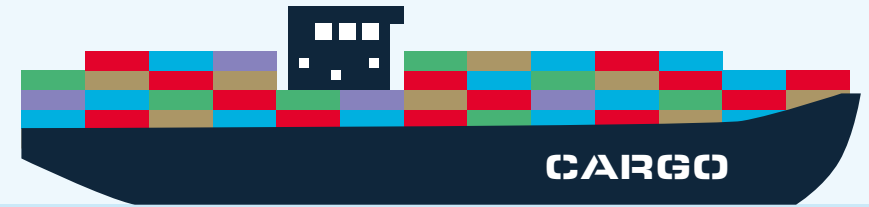
Which of these fruits are grown in the UK?



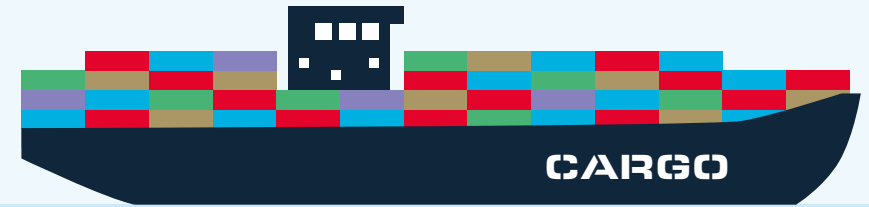
Where do the other fruits grow?



Have you ever seen a banana tree?



How do we get bananas?

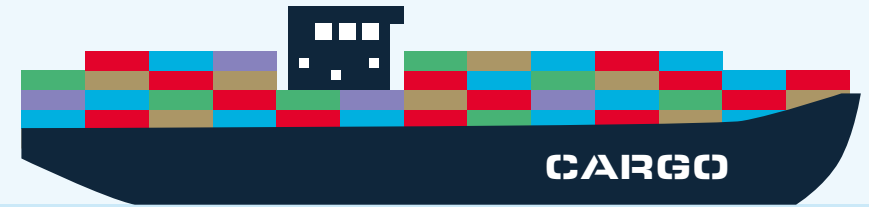


Bananas need a certain climate (or weather) in which to grow.

Bananas are not able to grow in the UK as it is too cold and rainy.

So... if we cannot grow them in the UK, how do the bananas we buy in the supermarket arrive here?

Where do our bananas come from?



Banana plants like:

Constant warm weather: not too hot and not too cold

Moisture (water): in the ground and in the air

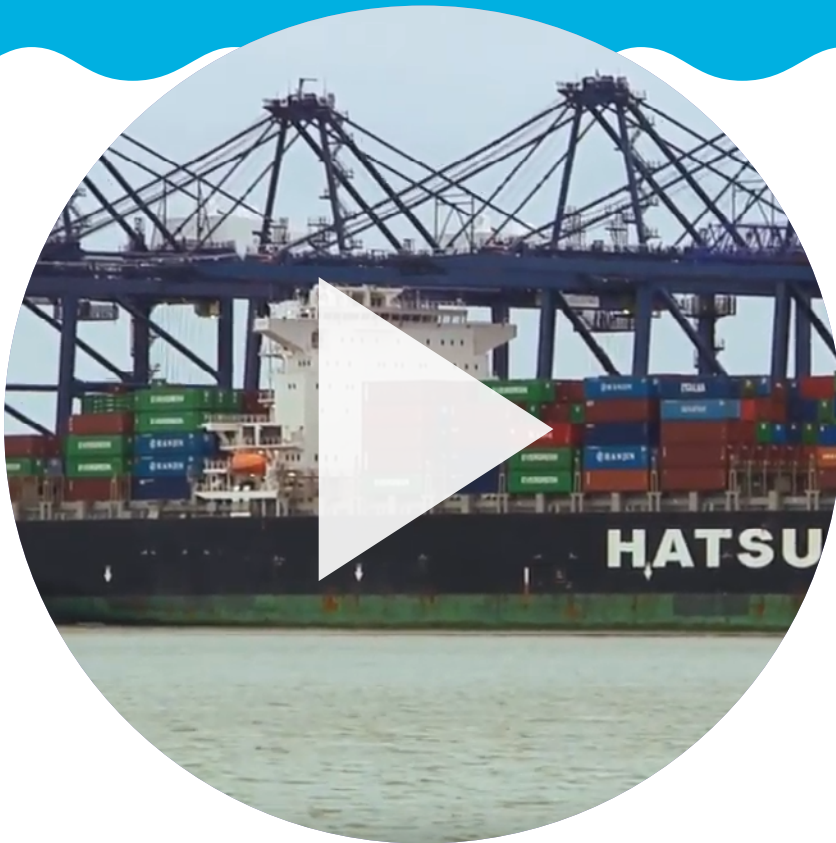
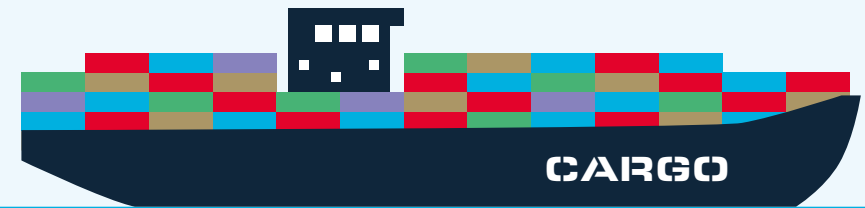
Banana plants do not like:

Strong winds

Very hot or very cold weather

Being hungry or thirsty

How do we get bananas?



Many of the things we buy in our shops are brought into the UK from overseas.

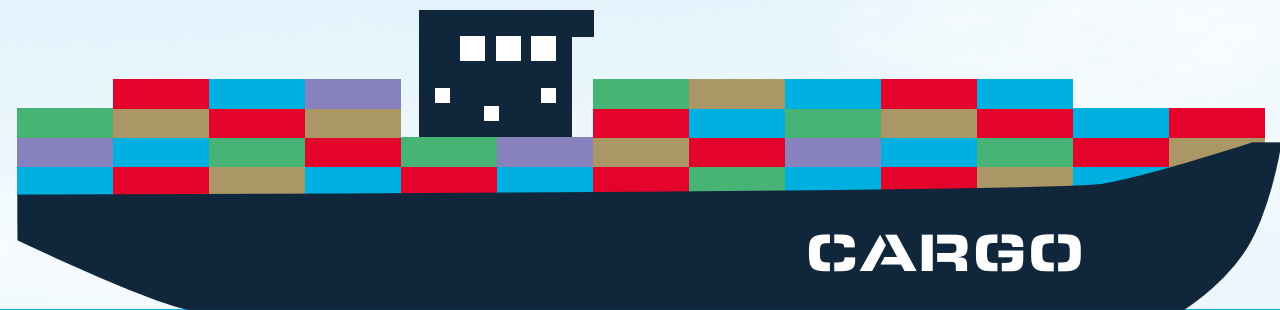
They arrive on huge container ships.

When goods are sent to another country this is known as **exporting**.

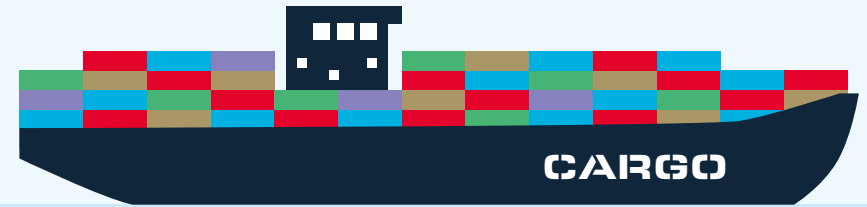
When a country brings in goods from another country it is known as **importing**.

Activity 1a

About Trinity House



Where in the world?



Can you match the food to the country it grows in?

Cashews

In summer we like:

In winter we like:

FOOD CARD

Mozambique

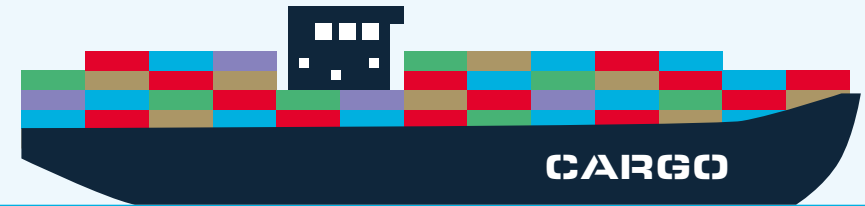
Summer:

Winter:

COUNTRY CARD

The image shows two cards tilted to the right. The left card is purple and white, titled 'Cashews'. It has two sections: 'In summer we like:' with three sun icons and a cloud with a red 'X' over it, and 'In winter we like:' with two sun icons and a rain cloud. Below is a pile of cashews and the text 'FOOD CARD'. The right card is green and white, titled 'Mozambique'. It has two sections: 'Summer:' with three sun icons and a cloud with a red 'X' over it, and 'Winter:' with two sun icons and a rain cloud. Below is a map of Mozambique and the text 'COUNTRY CARD'.

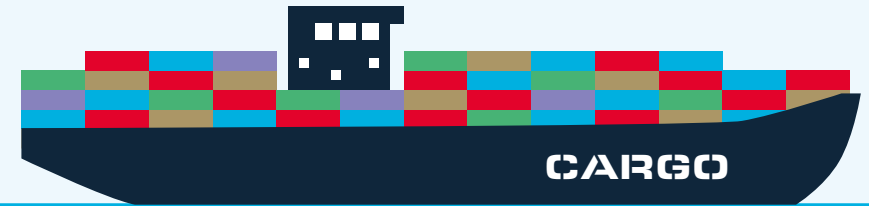
What is Trinity House?



Trinity House is an organisation that helps keep ships safe when they travel in the waters around England, Wales, the Channel Islands and Gibraltar.

It does this by providing **aids to navigation**.

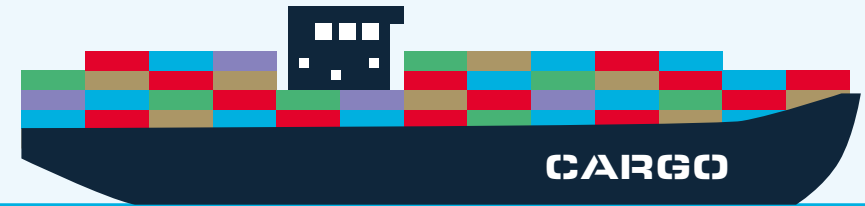
The role of Trinity House



Think back to the film. Can you remember what Trinity House does?



The role of Trinity House



Think back to the film. Can you remember what Trinity House does?



Trinity House helps keep ships safe when they travel in the waters around England, Wales, the Channel Islands and Gibraltar.

It does this by providing aids to navigation to help seafarers guide their vessel to safety.

Do you know what these are?



**What
is this?**



A lighthouse

Trinity House looks after 66 lighthouses around England, Wales, the Channel Islands and Gibraltar.



**What
is this?**



A buoy

A buoy is a highly visual object that floats in the sea and helps guide ships.

Their different colours, shapes and designs are part of a visual language that tell seafarers different safety messages, such as marking nearby hazards and safe passages.



**Who are
these
people?**



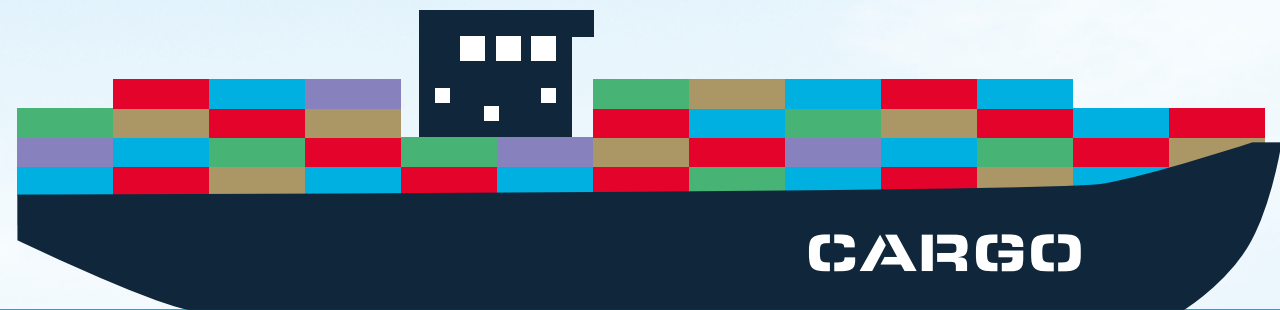
Seafarers

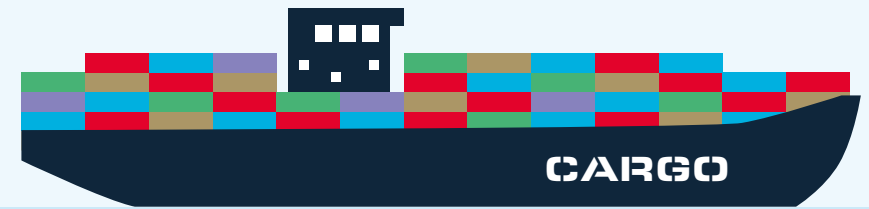
The sea can be a dangerous place.

Trinity House also provides important training for young people who want to go to sea, to help them stay safe.

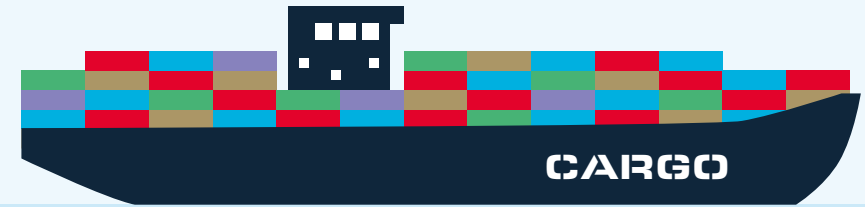
Activity 1b

Trade





How many different kinds of transport can you think of?



How many different kinds of transport can you think of?



Road



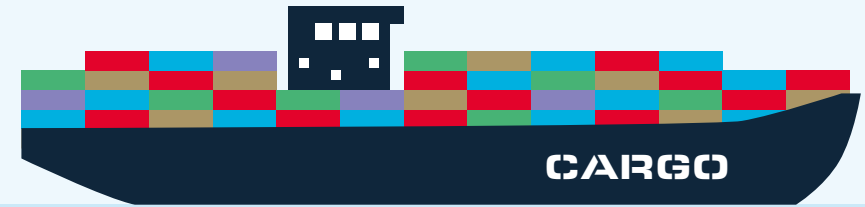
Air



Rail



Sea



Which method of transport do you think is the most popular for transporting goods?



Road



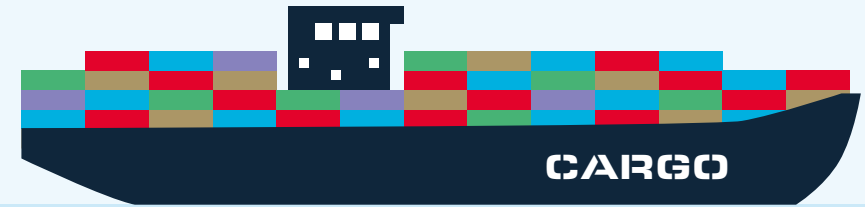
Air



Rail



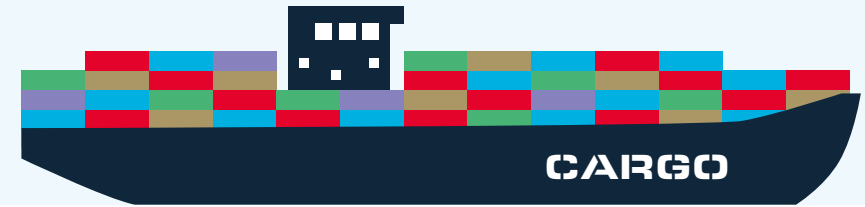
Sea



Of these different transport options, most imports and exports are transported by sea!

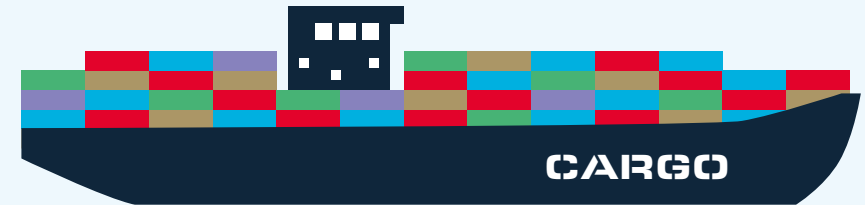


Sea



This map shows where ships arrive in the UK from other countries bringing goods that we can sell in our supermarkets.

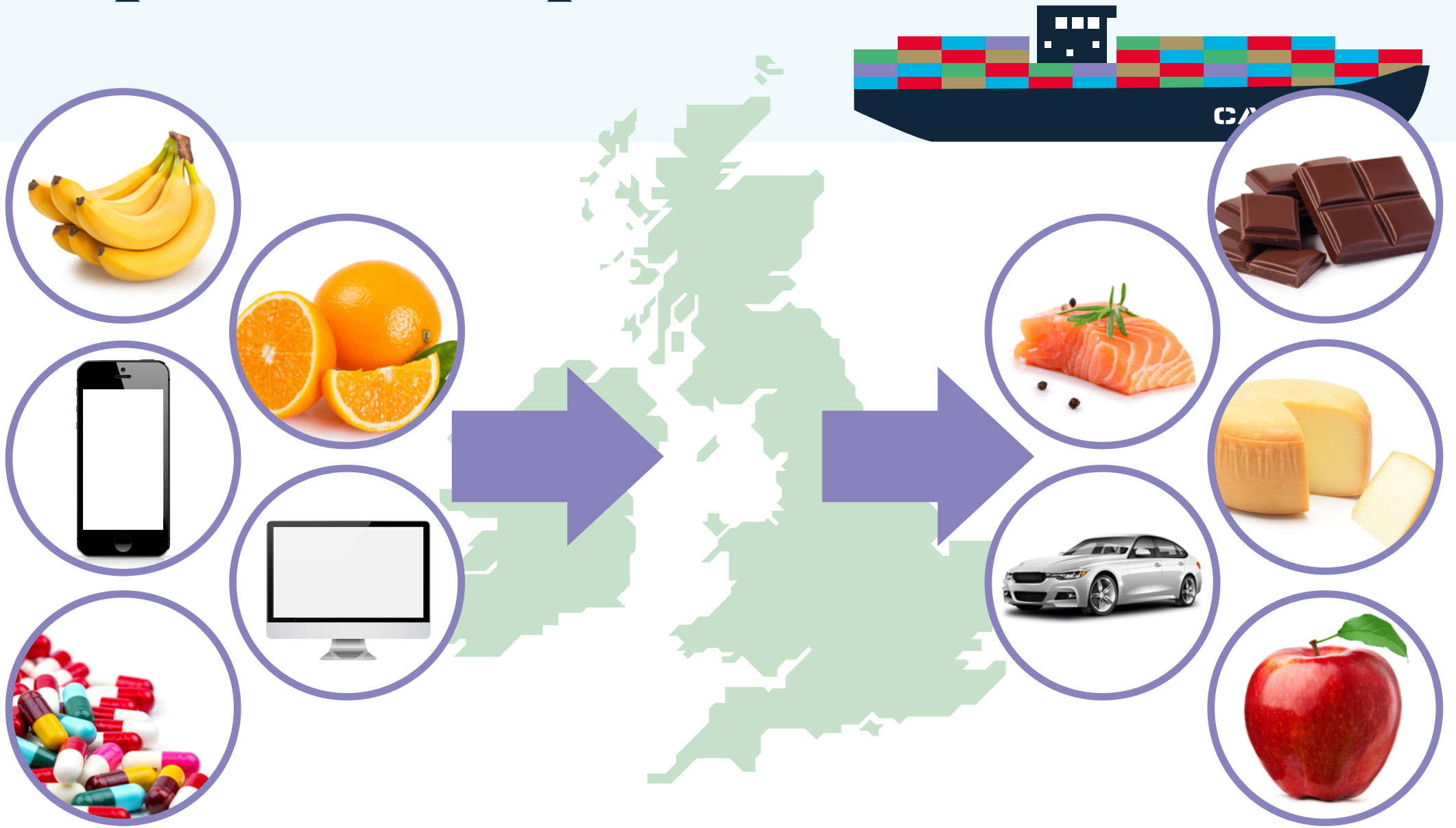
Bringing goods into a country is called **importing**.



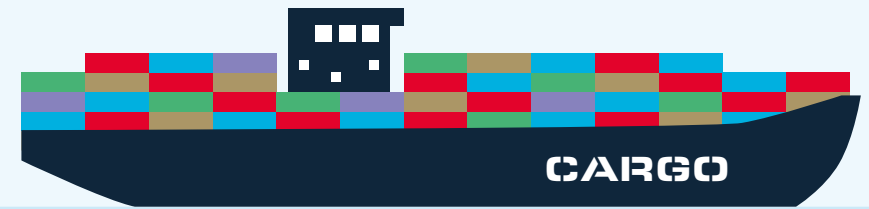
We also send goods we grow or make to other countries. This is called **exporting**.

This process of importing and exporting by sea is known as **shipping**.

Import and export



Safety at sea

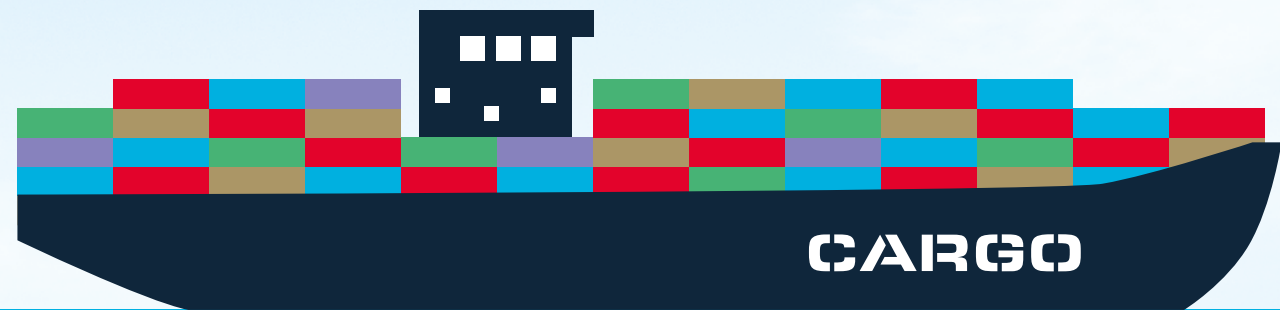


Because the UK imports (brings in) lots of different goods from other countries, our waters have become very crowded.

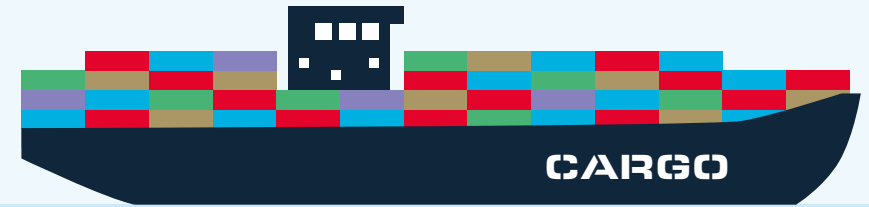
As there is so much sea traffic, ships need help to be guided safely.

Activity 2

Trade and transportation



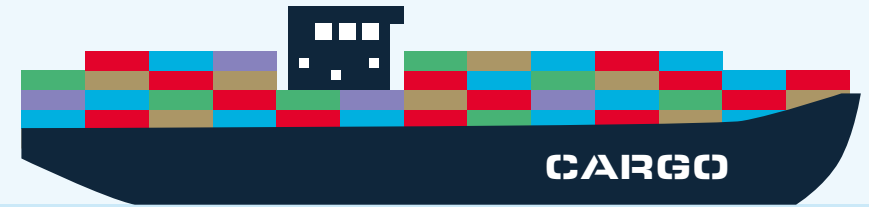
UK ports



What is the
closest port to
your school?

How do you think
goods travel from
your closest port to
your supermarket?

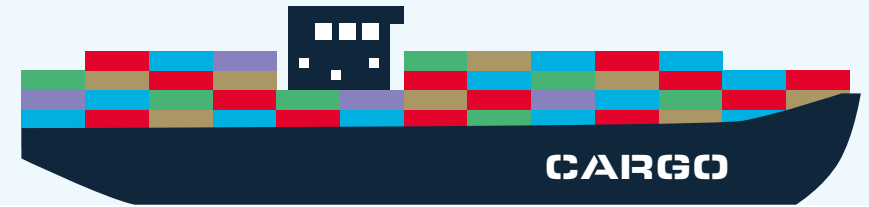
Interactive pupil worksheet



Look at the packaging for the item of food you brought in from home. Can you see 'country of origin' written on the packaging? What is it?

What item of food is your packaging for?

Interactive pupil worksheet

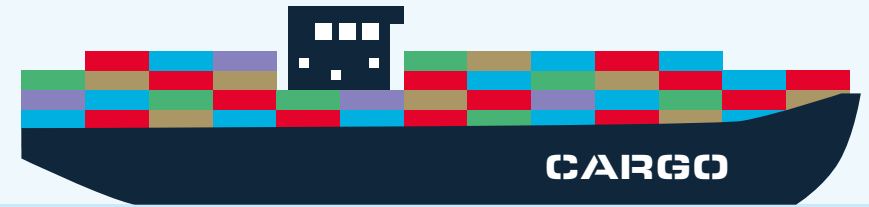


Where does your food item come from on the map?



Class quiz

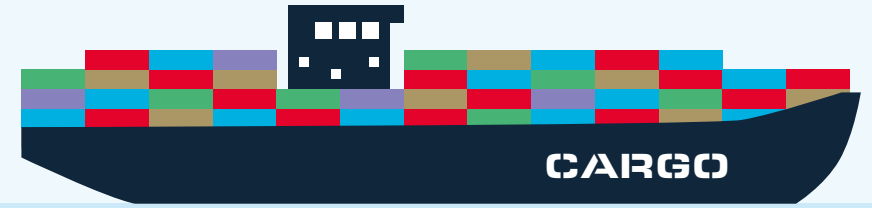
Test your knowledge!



Why don't we grow every type of fruit and vegetables in the UK?

Class quiz

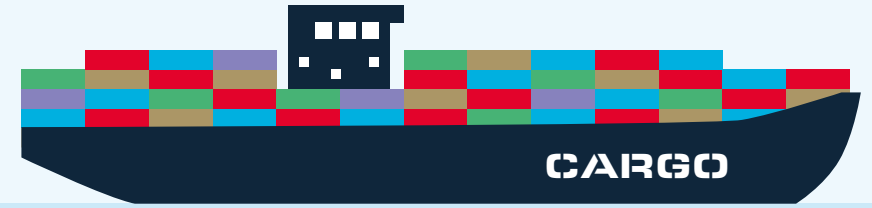
Test your knowledge!



What does the word
'trade' mean?

Class quiz

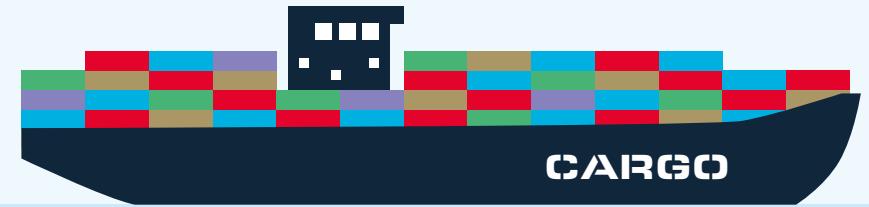
Test your knowledge!



What does
'export' mean?

Class quiz

Test your knowledge!



Which of these does Trinity House use to keep ships safe?