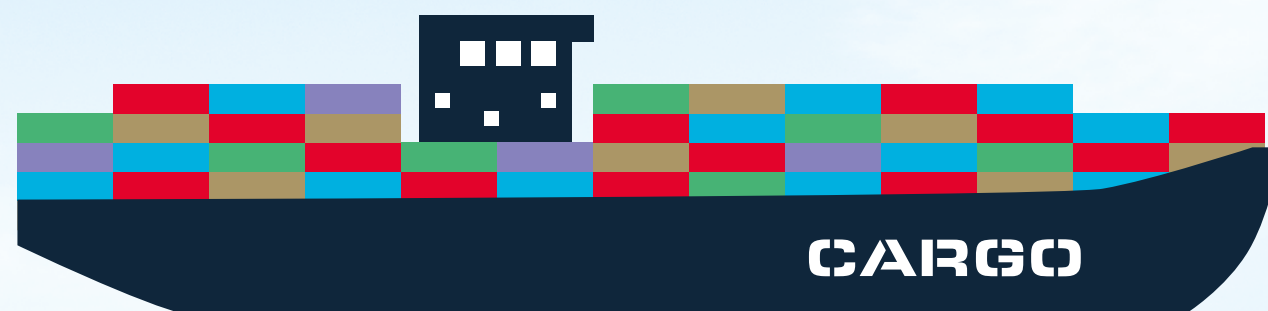




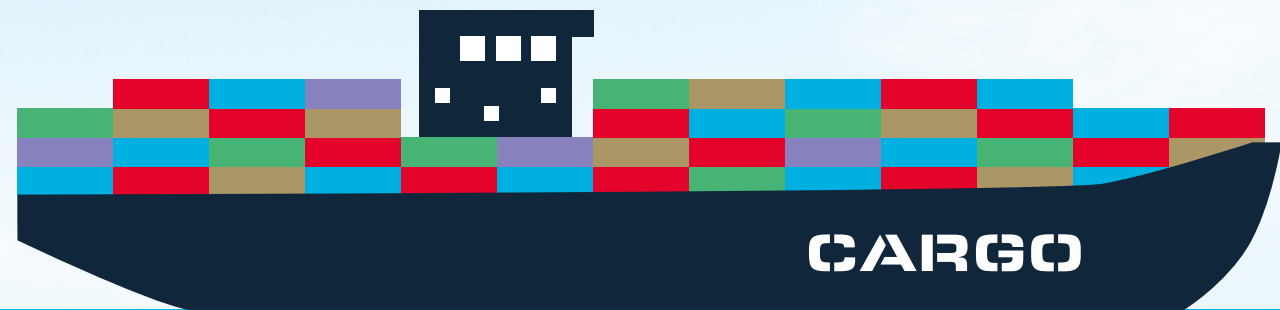
TRINITY HOUSE

Global connections



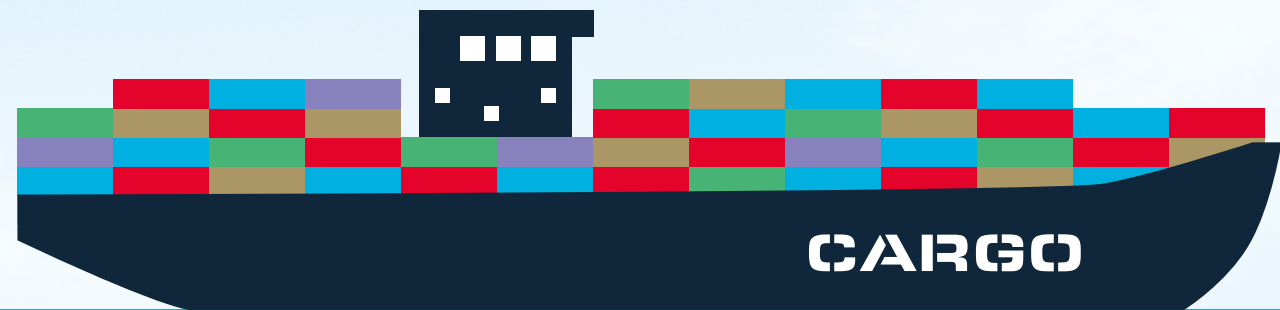
Starter →

Activity 1 →



Starter

What is globalisation?



What is trade?



The buying and selling of goods and services we want and need



Do you recognise these logos?





Products made by these and other companies are made and sold to people living around the world.

They are sold on a **global scale.**



Global trade



What do you think has helped trade become global?

Global trade



Advances in the following have enabled trade to be carried out globally:

Communication (internet, email, social media)

Computing (advanced computing to help optimise cargo movements, financial transactions and shipping operations)

Transport (bigger, faster, cheaper modes of transport)

Globalisation

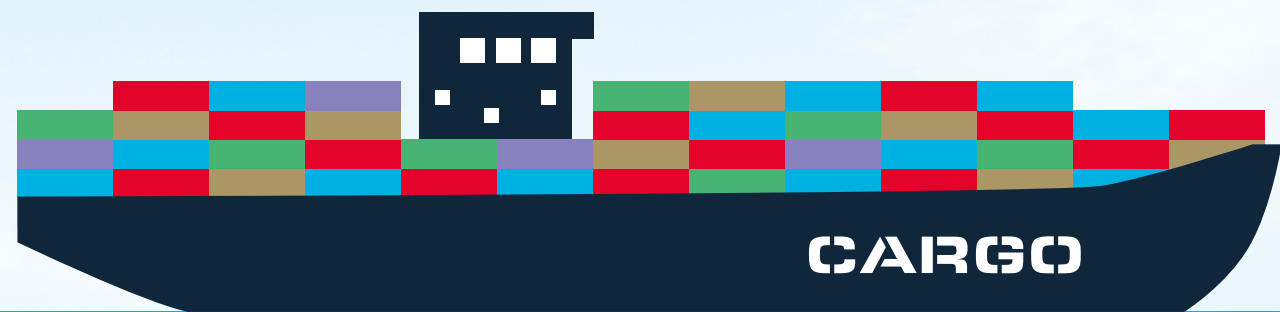


The world is becoming increasingly interconnected due to increased trade and cultural exchange.

Globalisation is the process by which people, cultures, money, goods and information can be transferred between countries.

Activity 1

Shipping and Trinity House



The importance of shipping



Every year, **billions of tonnes of goods** cross the world's oceans, following the main trade routes.

The most important forms of transport for trade are **tankers, bulk carriers and container ships**.

The largest of these ships now carry almost **20,000 containers**, packed with consumer goods and other materials.

Maritime transport is a vital part in the global economy. Around **90% of all trade** is carried for at least part of its journey via sea routes, on a fleet of over **50,000 ships**, carrying over **8 billion tonnes** of cargo every year.

The importance of shipping



As the need for the import and export of food and goods around the world increases, our shipping lanes become increasingly crowded.

The UK is an island nation and depends on ship-borne trade. Because there is so much sea traffic, ships need help to be guided safely through our waters.

Aids to navigation



Trinity House looks after 66 lighthouses and around 450 buoys around England Wales, the Channel Islands and Gibraltar.

These help ships navigate safely when they visit our waters.

Buoys



A buoy is a highly visual object that floats in water and is used to locate or warn passing ships. Buoys are generally bright in colour.

Their different colours, shapes and designs are part of a visual language that tell seafarers about different safety messages, such as nearby hazards, safe routes and more.

Lightvessels



Trinity House has a number of lightvessels. These provide a visual aid to navigation in daylight hours in the form of a large red ship and by night they provide a long-range powerful light for ships in the area.

The aids to navigation provided by Trinity House assist all mariners, at all times and in all conditions.